



---

# Introduction

We have tried to place the history of our Association in the context of events which were happening in the state, nation and world. This gives the reader an insight into the social, political and economic pressures under which these Elks lived.

The archives of the Wisconsin Elks Association have been lost or destroyed by fire. The author is thankful for donations, by lodges and individuals, of many documents and artifacts. These offer many insights to the past 100 years. This collection is however, like a jigsaw puzzle with many pieces missing. In order to flesh out the century we sometimes had to resort to conjecture, which we identify wherever it is used. Given the gaps in the documentation, we do not expect this book to be the final word of Elkdom in Wisconsin during its first 100 years. Future historians will have access to info not yet discovered. They will be able to replace our suppositions with facts.

The author especially thanks Bev Staniak, who spent several years doing difficult research about 1915-1917. We also recognize Dan Stangel for his invaluable information about the Wisconsin Elks' service to Veterans during 1945-1955. I also thank State Trustee Earle Sievright and State Secretary Ken Johnson, for both of these men put many hours into the creation of this book. The documents and pictures collected by Charles Gronitz were very important in filling gaps in our information. Many other Elks and Lodges donated documents and artifacts, while still others were asked to supply answers to highly-specific questions. This book could not have been created without such excellent support and collaboration. Those involved will recognize their inputs as they read various portion of this book.

The appendix to this book should be of interest to those Elks who want to know something about the history of their own Lodges. Called "A Peek Into the Past", it is a reprint of information published about all of the Wisconsin Lodges in 1952. We think that the readers will be intrigued by the pictures, and words, by which those Elks described their lodges 50 years ago.

There will inevitably be some errors in spelling, syntax and/or dates/places in this book. I note again that the "jigsaw puzzle" of documentation left gaps, for which assumptions had to be made. As far as spelling or other typos are concerned, I apologize and hope that you will make allowances since "s\_\_\_\_\_ happens".

Bob Hackl, PSP, WEA, 11/1/01



---

# Chapter 1: Birth of the Association

The early records of the Wisconsin Elks Association are quite sketchy, but there are enough facts available to assure that our association was the brainchild of M.E. Dillon, Past Exalted Ruler of the Ashland Elks. He proposed that the association have its organizational meeting in Ashland Lodge on April 21-23, 1902. The Secretary of the Ashland Lodge sent out the invitations.

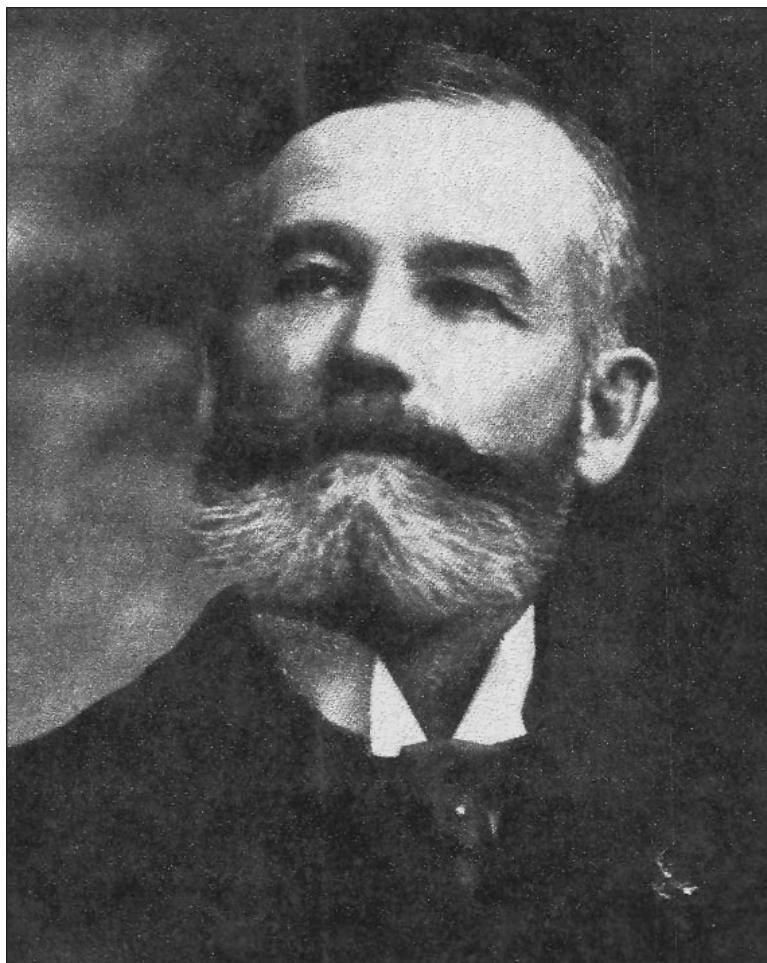
The attendees at the April, 1902 organizational meeting were:

Antigo Lodge 662: M. F. Crowe  
Ashland Lodge 558: M. E. Dillon  
Fond du Lac Lodge 54: T. W. Mayam  
Green Bay Lodge 259: E. A. Arthur  
Milwaukee Lodge 46: C. H. Hamilton and T. W. Nisbet  
Oshkosh Lodge 292: M. H. Zacharias and A. M. Frederick  
Rhineland Lodge 598: D. H. Walker and W. T. Stevens  
Stevens Point Lodge 641: M. Clifford  
Waukesha Lodge 400: A. F. Warden  
West Superior Lodge 403: W. M. Trumbell and J. L. Malone

(Note: Throughout this book, we use Lodge names and numbers which existed at the point in time.)

Thus eleven of the 28 lodges then chartered in Wisconsin were represented at this meeting. This is remarkable when one considers the primitive nature of transportation at that time. Although it had been a state for over 50 years, Wisconsin had almost no paved roads between its cities. City-to-city transportation was completely dependent on horses, oxcarts or on steam locomotives powered by coal or wood, while the best “highway” in Wisconsin was a planked road stretching from “downtown” Milwaukee westward.

What makes this meeting even more remarkable is the nature of risk taken by each of its delegates. The Grand Lodge did not, at this time, encourage the creation of state associations. In fact, the question of whether state associations should be banned was before the Grand Lodge until 1907, when they were finally sanctioned. Not until 1916, however, was the G/L Constitution amended to allow such associations to exist. Thus the Elks at the Ashland Conference not only endured difficult travel, they also had no assurance that what they were creating had any probability of survival.



A. F. WARDEN

First President of the Wisconsin Elks Association

---

The conference was called to order by M. E. Dillon. A. F. Warden was chosen Chairman while M. H. Zacharias was picked as Secretary. Several committees were formed and a draft constitution was adopted. Oshkosh was selected as the site for the first formal State Convention, which would be held in June of 1902. The first “permanent” State Officers were elected:

President: A. F. Warden, Waukesha

Vice-President: T. W. Mayam, Fond du Lac

Secretary: M. H. Zacharias, Oshkosh

Treasurer: M. E. Dillon, Ashland

The delegates adopted the name “The Wisconsin Association B.P.O. Elks” for the fledgling organization and set, as their objective, “to promote the interests of the order of B.P.O. Elks in this state, to cultivate a more intimate acquaintance and greater sociability among the members thereof and to be an auxiliary to the Grand and Subordinate lodges of the Order in carrying on their work”.

Thus our state association was born. It was, essentially, conceived as a “social” organization, wherein ideas could be exchanged between the delegates from various lodges. The concept of purely social organization persisted until the onset of American participation in World War I.

---

## Chapter 2: 1902-1909

### *Presidents, Secretaries and Convention Sites:*

1902	A. F. Warden (Waukesha)	M. H. Zacharias	Oshkosh
1903	A. F. Warden (Waukesha)	R. W. Parsons	Ashland
1904	R. S. Witte (Milwaukee)	A. E. Treleven	Fond du Lac
1905	R. S. Witte (Milwaukee)	J. P. Breitenbach	Madison
1906	Geo. V. Lewis (Madison)	T. W. Burns	LaCrosse
1907	S. L. Martin (Milwaukee)	T. P. Buckely	Waukesha
1908	Geo. B. Borrows (Madison)	W. T. Thompson	Racine
1909	J. H. Kehlor (Kenosha)	H. A. Gunderson	Portage

### *~~ In the World at Large...*

This eight years witnessed extraordinary events in the history of our nation and the world. In 1903 Orville Wright became the first man to fly in an airplane, construction began on the Panama Canal and Lenin became leader of the Bolshevik Party. Japanese ships destroyed the Russian fleet in 1904. Albert Einstein introduced, in 1905, the famous equation “ $e=mc^2$ ”. Over 3,000 people died in the 1906 Frisco earthquake...a year which also saw the birth of the hot dog.

By 1908 the first of the Model-Ts were rolling off Henry Ford’s assembly lines...perfectly suited to the ruts which were then called roads in this country. In 1909, Robert Peary became the first human to reach the North Pole while Apache Chief Geronimo died, saying “There are very few of us left”.

### *~~ In the Wisconsin Elks...*

The Grand Lodge had two District Deputies (East and West) serving all of Wisconsin, a condition which would exist until 1930.

Our first State Convention was held at Oshkosh in June, 1902. President A. F. Warden rapped for order and set the tone for the meeting when he said “Our organization was formed to promote more intimate acquaintance among the members of the different Lodges of the state, gain standing and give influence to the Wisconsin jurisdiction in the Grand Lodge, and in general serve as an auxiliary to the Grand Body. With a better understanding of the purpose of our Association and a knowledge of the success and pleasure of our present reunion, our organization will easily become statewide and embrace all the Lodges in this jurisdiction”.

In 1902 there were 28 lodges in Wisconsin, 13 of them less than three years old. Beloit and Oconto were chartered in 1903 while the Kaukauna Lodge was chartered in 1905. The 1906 financial panic stilled the growth, temporarily, of the Wisconsin Elks, for no new lodges were formed until 1914.

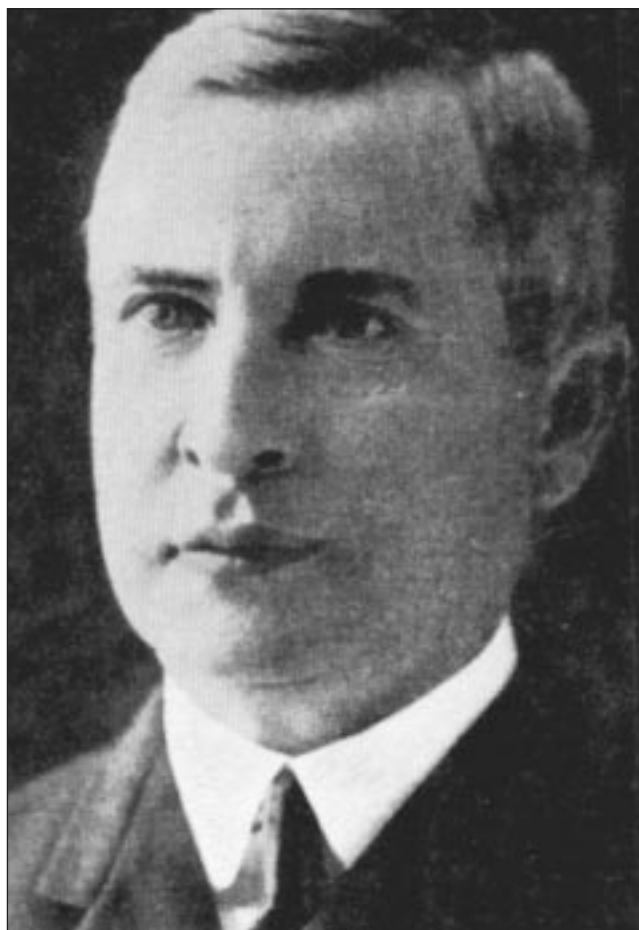
---

During the 1904 State Convention, steps were launched to gain recognition, as a state association, from the Grand Lodge. Our Wisconsin association was ultimately the 14th so-recognized by the Grand Lodge. During the 1908 State Convention, the name of our Association was changed to “B.P.O. Elks Reunion Association of Wisconsin”, confirming our then-emphasis on social gatherings.

From 1904 to 1909 there was a gradual decline in the number of delegates attending our annual conventions and in the number of lodges belonging to the State Association. By 1909, only eighteen of the 31 Wisconsin Lodges belonged to the State Association. This trend was then reversed; by 1915 all Wisconsin Lodges were members of the Association.

Life could be pretty “rough and tumble” for Elks during these years. For example, S. L. Martin was State President until May 1907. In June of that year he wrote a letter to his home Lodge, Milwaukee 46, asking the lodge to rescind its decision to have his name stricken from its roles. We have also seen references to initiation “rituals” involving such tricks as carrying pails of exploding firecrackers or marching around the Lodge room while balancing a stein of beer on one’s head. On the other hand, the 1907 Grand Lodge session adopted a resolution designating June 14th as “Flag Day” and followed this by adopting our formal Flag Day Ritual in 1908.





THOMAS B. MILLS  
Past Grand Exalted Ruler, 1912-1913

---

## Chapter 3: 1910-1917

### *Presidents, Secretaries and Convention Sites:*

1910	A. J. Horlick (Racine)	F. Butterworth	Menasha
1911	T. J. Pringle (Milwaukee)	A. B. Fontaine	Green Bay
1912	F. R. Weeks (Green Bay)	Theo Benfey	Sheboygan
1913	J. C. Karel (Milwaukee)	F. J. Taugher	Manitowoc
1914	J. C. Karel (Milwaukee)	Theo Benfey	Wausau
1915	O. R. Roenius (Grand Rapids)	Theo Benfey	Oshkosh
1916	O. R. Roenius (Grand Rapids)	Theo Benfey	Green Bay
1917	O. R. Roenius (Grand Rapids)	Theo Benfey	None

### *~~ In the World at Large...*

In 1910, the reappearance of Haley's comet triggered mass hysteria; suicides were common. High-button shoes for men \$3.50 per pair and Thomas Edison introduced a "Talking Motion Picture Machine". The Titanic sank in 1912, killing 1,517 people, while women won the right to vote in Wisconsin.

The assassination of Archduke Ferdinand triggered World War One in 1914; the New York Stock Exchange...beset with confusion...closed for 4 1/2 months. Pancho Villa invaded the United States in 1916 while 28,000 Americans were struck by polio; 6,000 died. In April of 1917, America entered the war...ended in 1918 with a total of 10 million dead, 20 million wounded. Over 70,000 Elks had donned American uniforms; over 1,000 of them had died.

### *~~ In the Wisconsin Elks...*

West Superior Lodge 403 produced Wisconsin's first Grand Exalted Ruler; Thomas Mills served in that office in 1912-13. Marinette Lodge was chartered in 1914, Chippewa Falls in 1915.

During our 1912 Convention, the name of our association was again changed, to "The Association of B.P.O.E. Lodges of Wisconsin. In 1916 our present name, "Wisconsin Elks Association" was adopted. As the war became the center of world focus in 1914, the Wisconsin Elks were torn with dissension, pro-German vs anti-German. Into this maelstrom of conflicting voices we introduce the fascinating story of Otto Roenius.

Otto was a charter member of the (then) Grand Rapids Lodge in 1901. In 1913 he became its Exalted Ruler. Only two years later, he became the President of our State Association. This leads us to some conclusions about the respect this man enjoyed among the Elks of Wisconsin... as does the fact that Mr. Roenius was the 1st of only two "Triple-Term" State Presidents. As emotions and war fever began

---

to tear at the Wisconsin Elks, Otto's known gifts as an orator were strongly tested in trying to hold the Association together. His three terms in office were capped by a singular event; in 1917, for the only time in Association history, there was no State Elks Convention. But in spite of the anti-war Germanic population of this state, the Wisconsin Elks changed from a "social" organization to a "service" organization. The Wisconsin Elks...along with the rest of the country...went to war as dozens of Elks Lodges donated their facilities for use as Red Cross Service Centers.

There are other indications that the Wisconsin Elks were seeking stability during this tumultuous period. In its early years, the position of State secretary was "passed around" so that he would be located in the city hosting the annual convention. In 1914, the office of State Secretary became more permanent in the nature as Theo. Benfey was elected to the post. He would be re-elected every year until his death in 1935.



**THEO. BENFEY**  
State Association Secretary, 1913-1935

---

## Chapter 4: 1918-1925

### *Presidents, Secretaries and Convention Sites:*

1918	C. Yockey (Milwaukee)	Theo Benfey	Fond du Lac
1919	C. Yockey (Milwaukee)	Theo Benfey	Manitowoc
1920	H. H. Dowd (Fond du Lac)	Theo Benfey	Milwaukee
1921	W. F. Hurtgen (La Crosse)	Theo Benfey	Milwaukee
1922	W. F. Schad (Milwaukee)	Theo Benfey	Beloit
1923	W. F. Schad (Milwaukee)	Theo Benfey	Madison
1924	W. F. Schad (Milwaukee)	Theo Benfey	Milwaukee
1925	G. W. Dwinnell (Waukesha)	Theo Benfey	Superior

### *~~ In the World at Large...*

Millions of veterans returned home to empty promises. The American Legion was created in 1919, as the Grand Lodge ordered that support of Bolshevism (Communism) was a violation of an Elk's Oath of Obligation. The 1918-1919 "Spanish Flu" epidemic killed 500,000 Americans as panic stalked the land.

In 1920, the "Red Scare" led to mass deportations of "political undesirables". Congress voted to not join the League of Nations...rendering that organization useless. The 18th Amendment took effect. America's new word was "prohibition" but Universal Suffrage also became the law of the land. Josef Stalin rose to power in 1922, Lenin died in 1924 and one year later, Adolf Hitler published the first volume of "Mein Kampf".

### *~~ In the Wisconsin Elks...*

In 1920 the Elks were 645,000 strong in 1,300 lodges with our Grand Lodge Headquarters in Dubuque Iowa. The first "Red Book of Initiation" was published by the Grand Lodge in 1924. Its stated purpose was to curb the excesses in initiation pranks...hazing...which had been prevalent up to that time.

Elkdom in Wisconsin enjoyed resurgent growth with the chartering of the Two Rivers Lodge in 1920, Rice Lake in 1922 and Platteville in 1923. In 1920 the "Grand Rapids" lodge became the "Wisconsin Rapids" Lodge when its home community changed its name. The Vollstadt Act (prohibition) plus wild stock market speculation almost ruined several Elks Lodges during 1924-28.

We do not know how Chancey Yockey became State President since his election should have occurred in 1917, when there was no State Convention. What we know about Mr. Yockey is that earlier Elks' historians considered him to be an outstanding leader during his 2-year term of office.



**CHAUNCEY YOCKEY**  
State Association President, 1917-1919

---

In 1918 our State Association adopted a new constitution. It continues, with amendments, to guide Association activities to this day. (Someday a copy of that 1918 document must be found, for it will identify the committees which had developed in our formerly-social organization during World War One.)

Many Elk historians hold William Schad, the last of our “Three-Term” Presidents, in very high esteem. We suspect this may be due, in part, to the chartering of two new lodges during his term of office. John Karel, a former two-term President, was appointed in 1919 to the Grand Lodge’s strangely-named “Big Brother Committee”.



**WILLIAM F. SCHAD**  
State Association President, 1921-1924



---

## Chapter 5: 1926-1933

### *Presidents, Secretaries and Convention Sites:*

1926	Carl Riggins (Oconto)	Theo Benfey	Green Bay
1927	H. A. Keifer (Wausau)	Theo Benfey	Wausau
1928	B. W. Arnold (Oshkosh)	Theo Benfey	Oshkosh
1929	C. E. Broughton (Sheboygan)	Theo Benfey	Marinette
1930	Edw. W. Mackey (Manitowoc)	Theo Benfey	Racine
1931	Edw. W. Mackey (Manitowoc)	Theo Benfey	Sheboygan
1932	Raymond C. Dwyer (La Crosse)	Theo Benfey	Appleton
1933	J. W. Selbach (Eau Claire)	Theo Benfey	Milwaukee

### *~~ In the World at Large...*

Television was invented in England in 1926, while Robert Goddard launched the first rocket. A year later, Lucky Lindy completed his historic flight across the Atlantic and Babe Ruth stroked 60 homers...a record which would stand for 34 years. Penicillin was discovered in 1928. The stock market crashed and by 1932 there are 30 million people...world wide...unemployed due to the Great Depression. President Roosevelt narrowly escaped assassination in Florida in 1933, while Wisconsin farmers held a state-wide milk strike. The 21st amendment was ratified, ending Prohibition.

### *~~ In the Wisconsin Elks...*

Beaver Dam Lodge was chartered in 1928. Charles Broughton became State President in 1929; he would be the Grand Exalted Ruler in 1946-47. The Elk National Foundation was created in 1928 when there were 779,000 Elks nationwide. By 1936 there would be only 446,000 Elks left, but all of Wisconsin's lodges had survived. The Milwaukee Lodge hosted the Grand Lodge Convention in 1933...the last time that it would be held in Wisconsin.

The Grand Lodge, in 1930, converted our two Districts (East and West) in to a 3-district configuration...Northeast, Northwest and South. This arrangement would last until 1961.

---

## Chapter 6: 1934-1941

### *Presidents, Secretaries and Convention Sites:*

1934	J. W. Selbach (Eau Claire)	Theo Benfey	Manitowoc
1935	M. E. Schwartz (Two Rivers)	Lou Uecker	Fond du Lac
1936	M. E. Schwartz (Two Rivers)	Lou Uecker	Eau Claire
1937	R. W. Mills (Fond du Lac)	Lou Uecker	Madison
1938	A. J. Geniesse (Green Bay)	Lou Uecker	La Crosse
1939	Tom F. McDonald (Marshfield)	Lou Uecker	Wausau
1940	Frank T. Lynde (Antigo)	Lou Uecker	Green Bay
1941	Bert A. Thompson (Green Bay)	Lou Uecker	Sheboygan

### *~~ In the World at Large...*

In 1934, 68,000 Chinese Communist soldiers died during the “long march”. Huey Long was assassinated in 1935. Blizzards and extreme cold paralyzed the U.S. for almost four months in 1936 as the U.S. struggled with the Great Depression. Amelia Earhart disappeared over the Pacific Ocean in 1937, while Japan/America tensions grew in the Far East. France and England declared war when Germany invaded Poland in 1939; The U.S. launched a much-protested military draft in 1940; the protests ended when Japanese planes killed 2,300 Americans at Pearl Harbor.

### *~~ In the Wisconsin Elks...*

“Permanent” Association Secretary Theo Benfey died in 1935. He was replaced by Lou Uecker who served until his death in 1945.

Burt Thompson launched the first Elks’ Public Flag Day Ceremony in Kenosha on June 14, 1935. Burt would become our State President in 1941, then spend the war years as a member of the Grand Lodge Activities Committee. In 1948 he was appointed as the first permanent assistant to the Grand Exalted Rulers, serving in the capacity for thirteen years. In 1968, Burt became the proposer and first Chairman of the Wisconsin Elks’ State Major Project.

In 1936, the Baraboo Elks took occupancy of the mansion of circus-baron Al Ringling. They continue to maintain that historical showcase to this day. In 1937, our State Association established its first scholarship contests and awards.

---

In 1940, there were 490,000 Elks in the U.S.A., a year in which the Elks launched the National Aviation Recruiting/Training Program. The Grand Lodge, in the year, also created the “Elks National Defense Commission”. In Wisconsin, 1940 was the first year in which the State Elks held Conferences...over and above their annual Convention. The first State Conferences were held in Baraboo (October 1940), Oshkosh (February 1941), and Sheboygan (April 1941).

1940 and 1941, during Bert Thompson’s term of office, also marked the first time that the State Ritual Contest was held prior to the Grand Lodge Convention, so that our State Champions could represent the Wisconsin Elks.

Appleton’s Ritual Team was the first to represent Wisconsin in national competition, placing 8th. (The State Association then approved \$100 to assist Appleton in defraying its costs in sending the team to Grand Lodge.)

The Merrill and Rhinelander Lodges withdrew from the State Association in 1941, citing an inability to pay the state dues.

---

## Chapter 7: 1942-1949

### *Presidents, Secretaries and Convention Sites:*

1942	C. O. Fillinger (Marinette)	Lou Uecker	Ashland
1943	A. W. Parnell (Appleton)	Lou Uecker	Janesville
1944	F. L. Fawcett (Milwaukee)	Lou Uecker	Appleton
1945	W. A. Uthmeier (Marshfield)	Leo Schmalz	Wausau
1946	F. W. Fisher (Janesville)	Leo Schmalz	Milwaukee
1947	J. C. Fay (La Crosse)	Leo Schmalz	Superior
1948	A. V. Delmore (Two Rivers)	Leo Schmalz	Madison
1949	W. J. Eulberg (Portage)	Leo Schmalz	Appleton

### *~~ In the World at Large...*

War raged and Japanese/American citizens were interned in 1942. Benito Mussolini was deposed as Italian dictator in 1943 and submarines built in Manitowoc sank four Japanese ships. By August of 1945, Germany and Japan had both surrendered and 55 million people were dead. In 1948, Harry Truman ordered the end to segregation in the U.S. Armed Forces as the Berlin Airlift began. In 1949, Communists took over mainland China while the U.S. was paralyzed by simultaneous coal and steel strikes.

### *~~ In the Wisconsin Elks...*

In 1941, we found the first reference to the Wisconsin Elks "Vice-President/At-Large" position, a job which would be renamed as "President-Elect" in 1956. We also find, in 1943, a reference to a War Bond drive to buy a bomber which was to be entitled "Spirit of Wisconsin Elks". According to PSP Wendall Smith, the bond drive was successful and the plane was a B24 bomber.

During Lou Uecker's 11-year term as "Permanent" State Secretary, his home lodge was Antigo for two years, Two Rivers for five years, Appleton for four years. Upon his death in 1945, Leo Schmalz of Kaukauna took the post for the next 20 years. Leo would serve again, in 1967, as State President.

In 1945, the Merrill Lodge was lost, having been chartered in 1901. In spite of assistance from the Antigo Lodge...the Rhinelander Lodge chartered in 1900, was gone a year later.

Sheboygan's Charles Broughton was the G.E.R. in 1946-1947. He was the last Wisconsin Elk to hold the post in this century. He had a rough year in office...suffering a broken back on April 20, 1947 while traveling from Ohio to West Virginia by automobile.

In 1947, the Grand Lodge proclaimed that commercial gambling in Elks Lodges was forbidden, as was membership by any Elk in the Klu Klux Klan.



LOU UECKER  
State Association Secretary, 1935-1945



**C. E. BROUGHTON**  
Past Grand Exalted Ruler, 1946-1947

---

In 1945, millions of veterans returned to the United States. This launched one of the proudest decades in the history of the Wisconsin Elks Association. Under Veterans' Service chairmen like Dwayne Peck and Darwin Scoon, Wisconsin Elks aggressively tended to the needs of the returning servicemen.

Many returning vets had no civilian clothing to wear; soon there were truckloads of clothing arriving at Vet Homes such as Tomah and King.

Boxing matches were held weekly for the entertainment of the Vets at Wood Hospital. Variety shows were put on each Sunday night in Milwaukee, each Monday and Tuesday at King, each Wednesday night at Tomah and on Thursday nights in the Madison T-B wards...all at Elk expense in a project which ran into the 1950's.

The "Committee on Hospitalized Veterans' Entertainment" set an assessment of 50 cents...for each Wisconsin Elk...to pay for the traveling road shows. This was a substantial amount if one considers that total State dues were then only 20 cents per member.

With Wisconsin Elks funding, a pontoon boat and a truckload of rowboats went to King for the use of the vets there, while similar loads of recreational gear were distributed to Vet facilities around the state. Truckloads of lumber went to the vet hospitals for use in hobbies and in carpentry training.

Truckloads of industrial belts..thick leather strips up to two feet wide and up to 20 ft long (used to power industrial machines from spindles suspended near factory ceilings) went to veterans hospitals for use in making purses, wallets and belts.

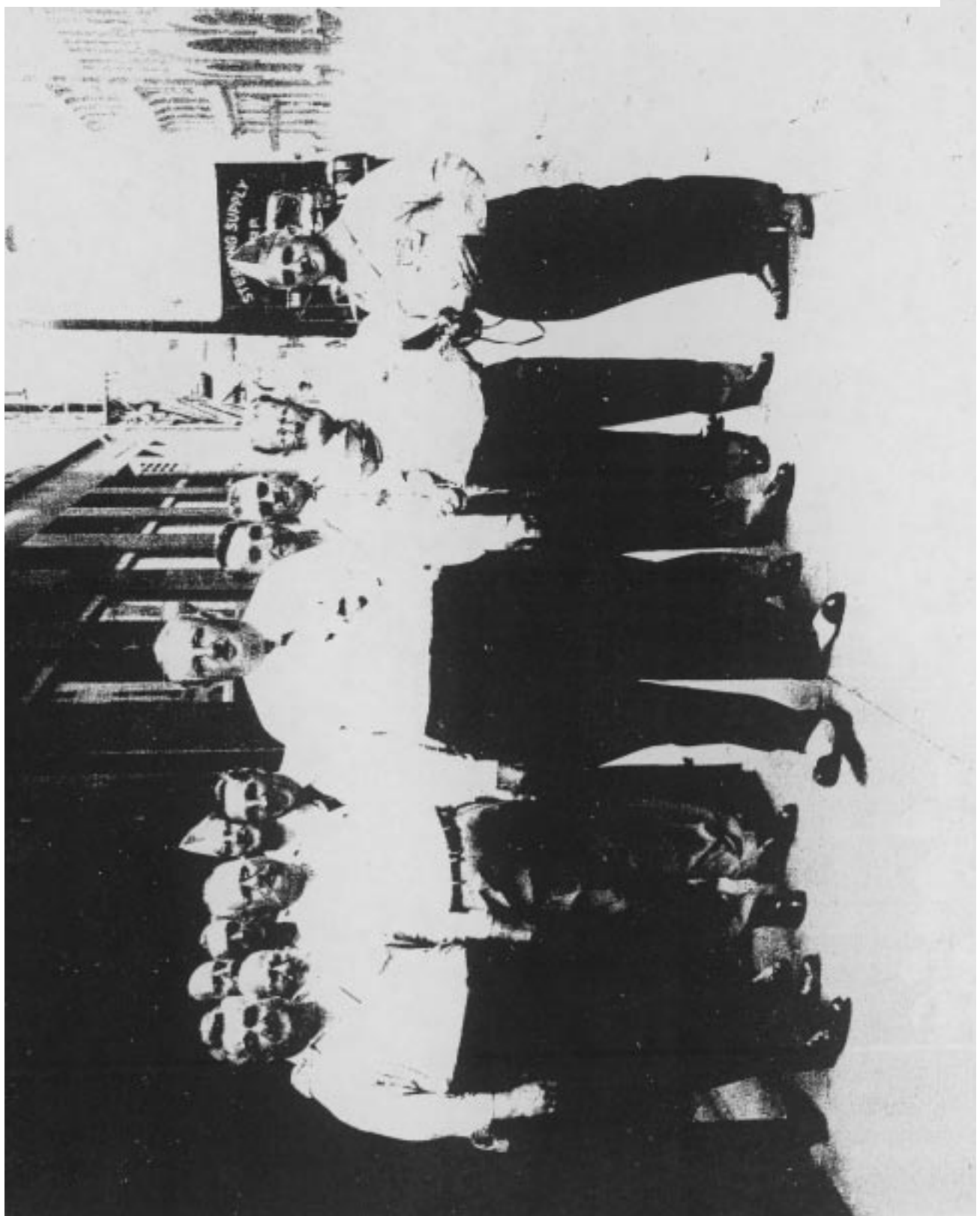
Deer hides were collected throughout the state, then delivered to Berlin, Wisconsin where they were tanned before being returned to the Elks for glove-making by the vets.

These and dozens of similar unselfish acts, by individual lodges as well as by state-coordinated projects, made this a proud time in the history of our state association.

By 1946 our State had 22,000 Elks, the 12th largest population in the U.S.A. Our Association had 16 standing committees:

Lodge Rehabilitation	Grand Lodge Foundation	Credentials
Good of the Order	Crippled Children	Laws
Bowling	Veterans Rehabilitation	Lapsation
Most Valuable Student	Publicity	State Scholarship
Auditing	Youth Activity	Golf







---

One of the exceptional Elks of this period was Bill “Tiny” Uthmeier. He had been ER of the Marshfield Lodge in 1939 and became state president in 1945. Mr Uthmeier, who was \*not\* “tiny” in either height or build, handled the arrangements for Wisconsin Elks’ trips to Grand Lodge until well into the 1960’s. Bill was the second recipient of the Wisconsin Elk-Of-The-Year award, receiving that honor in 1976.

The photo on a near page shows “Tiny” and his merry band of Committeemen at the Grand Lodge Session in Los Angeles. We are not sure but suspect that the Elk on the right side of this picture could be Carlos (“Milwaukee Lodge seconds that motion”) Henningfeld.

---

## Chapter 8: 1950-1957

### *Presidents, Secretaries and Convention Sites:*

1950	W. I. O'Neill (Milwaukee)	Leo Schmalz	Oshkosh
1951	R. J. Fink (Neenah-Menasha)	Leo Schmalz	Baraboo
1952	Laurie C. Welch (Baraboo)	Leo Schmalz	Green Bay
1953	E. H. Latimer (Wausau)	Leo Schmalz	La Crosse
1954	James Boex (Green Bay)	Leo Schmalz	Racine
1955	A. E. LaFrance (Racine)	Leo Schmalz	Wausau
1956	Ken F. Sullivan (Madison)	Leo Schmalz	Madison
1957	A. J. Miller (Portage)	Leo Schmalz	Fond du Lac

### *~~ In the World at Large...*

The North Korean army invaded South Korea in 1950...Joe McCarthy vowed that communists had infiltrated much of the government. Alger Hiss was convicted of espionage. One year later, Truman fired McArthur. The first hydrogen bomb was test-fired in 1952 and the Korean War truce was signed in 1953; 55,000 Americans had died there. By 1956, Joe DiMaggio had married and divorced Marilyn Monroe, Jonas Salk had perfected his polio vaccine and Elvis Presley had recorded "Heartbreak Hotel". Wisconsin went to daylight-savings time in 1957. Later that year the Russians launched Sputnik...pieces of which landed in downtown Manitowoc.

### *~~ In the Wisconsin Elks...*

In 1950, GER J. B. Kyle spoke the words which ring so true today "Remember that the reason for the existence of an Elk Lodge is to serve the people of its community", while Jean Hirsch from La Crosse won first place in the National Elks Most Valuable Student Award. Elk membership crossed 1,000,000 men in that year.

The 50th Anniversary Booklet (1952) of our Association lists 13 standing committees:

Youth Activities	Recreation
Grand Lodge Convention	Golf
Rehabilitation	Scholarship Awards
Crippled Children's Commission	Bowling
Ritualistic Exemplification	Special War Committee
Veterans' Entertainment	Veterans' Service
Most Valuable Student Contest	

(Note the differences between the 1952 and 1946 lists of our Standing Committees.)

---

In 1952, Laurie Welch became the only State President to die while in office; his aircraft flew into a mountainside in Montana. Ed Latimer completed Laurie's term of office before commencing his own. In 1953, the Crippled Children's Committee of the W.E.A. was disbursing money directly to the Lodges, for cases being handled in their local communities. This committee apparently operated as does today's "Committee for the Disabled".

In the records for 1953 we also find the first reference to the W.E.A.'s Youth Activities Committee.

1955 was a good year for the Wisconsin Elks. State membership was in excess of 27,000... an all time high...our Association placed second nationally in Youth Activities and Appleton Lodge took a national 3rd place award for its Flag Day Ceremonies. This Lodge and its home community would ultimately become the site of the largest Flag Day celebration in the United States. In 1955 we also find reference to the 65-piece Youth Band, from the Racine Lodge, entertaining the veterans at the Wood Memorial Hospital. This band would ultimately appear, at the Grand Lodge, for several years.

PGER Broughton died in 1956...the year in which we find the first reference to an Elks' donation, of \$1,000, to Camp Wawbeek. This was also the year that our Association began to hold clinics for Exalted Rulers and Lodge Secretaries. In that year we also note that PSP Al LaFrance was Grand Esquire and our press releases had their first references to the title "President-Elect".

On 5/17/56, for the first time our Annual State Convention became a Spring event. The former (Autumn) State Convention became our Fall Conference...being moved from August to September. Our first Mid-Winter Conference was held 2/16/57. In 1957, we also welcomed our first Grand Lodge Sponsor, PGER Floyd Thompson from Illinois.

---

## Chapter 9: 1958-1965

### *Presidents, Secretaries and Convention Sites:*

1958	Arthur Chadik (Milwaukee)	Leo Schmalz	Appleton
1959	J. M. Van Rooy (Appleton)	Leo Schmalz	Superior
1960	Jack F. Froom (Wausau)	Leo Schmalz	Green Bay
1961	Dr. M. J. Junion (Green Bay)	Leo Schmalz	Oshkosh
1962	Dr. J. R. Casanova (Watertown)	Leo Schmalz	Manitowoc
1963	James G. Franey (Eau Claire)	Leo Schmalz	LaCrosse
1964	Paul A. Fischl (Manitowoc)	Leo Schmalz	Racine
1965	Harold Canaan (Platteville)	Vernon Hopf	Fond du Lac

### *~~ In the World at Large...*

Twenty million Chinese died in the 1958 “Great Leap Forward”. Fidel Castro subjugated Cuba in 1959, while Alaska and Hawaii gained statehood. Gary Powers’ U-2 was downed in 1960, leading to a disastrous Krushchev/Kennedy meeting the following year. The Berlin Wall was constructed in 1961 and we almost went to nuclear war in 1962 during the Cuban Missile Crisis. John Kennedy was assassinated in 1963, the year that Martin Luther King gave his “I have a dream...” speech. In 1963, the Supreme Court ruled that prayer in public schools was forbidden. Many anti-segregation workers were attacked in Alabama in 1965 as midwest tornados killed over 270 people in one day and the riots in Watts left 34 dead. “Flower Power” was in full bloom; drugs and promiscuous sex were the new religions as “God was Dead”.

### *~~ In the Wisconsin Elks...*

The Sturgeon Bay Lodge was chartered in 1959; it would last until 1997. The Wauwatosa Lodge was chartered in 1960-61; it would last until 1997. Walworth-Lakeland Lodge was chartered in 1961 and continues, today, to grow and prosper. In July of 1961, the Grand Lodge converted our state of four districts...Northwest, Northeast, Southwest and Southeast. This arrangement would be retained well into the 1990s. PGER Fred Bohn (Ohio) became our new Grand Lodge Sponsor.

By 1961, the state association believed that the Rhinelander Lodge was ready for rehabilitation and that there was potential for a new lodge in Waupaca; neither of these ever came to pass.

Green Bay’s Leon Rondou, the Elk for whom the award given to Wisconsin’s best hoopshooter is named, made his appearance as Chairman of our State Youth Activities Committee.

The Wisconsin Elks had a membership of 24,755 in 1964, a drop of almost 3,000 Elks from our 1954 levels. We would climb to 26,967 Elks in 1959, before launching the long decline to our current membership of under 15,000. The 1964 Annual Convention established a registration fee (\$1.00) for all attendees of future conferences and conventions.



Picture, left to right: William C. Matousek, M.D. Chief of Staff; D. C. Firmin, Center Director; Vernon Hopf, State Secretary, Elks; Mr. Robinson, State President, Elks; Paul Fischl, Past State President, Elks; Mr. Eubanks, Chairman, Veterans Committee; Dan Stangel Trustee; Earl Sternberg, Veterans Committee; Ken Sullivan, Trustee; Earl Accola, Director Voluntary Services.

The Elks Club of Wisconsin has for many years provided stage shows once a month for veterans at Wood, Tomah, and Madison VA Hospitals.

Wood Hospital, 1965

This year they decided to donate television sets instead of providing the stage show. On January 17th the Elks Club made formal presentation of ten black and white TV sets and one color TV set. The color TV is now being enjoyed by members in the Recreation Building. The black and white sets have been put into use in the Hospital.

---

Leo Schmalz retired as State Secretary in 1964, replaced by Kenosha's Vernon Hopf. 1964 seems to have been the end of monthly stage shows at Wood, Tomah, King and Madison VA hospitals. (These shows had been weekly in the 40's and early 50's.) On the other hand, state records suggest that massive amounts of product ...TV sets, air conditioners, strollers, carts, movie projectors and even a Station wagon...poured into the VA hospitals during 1965-67, when Dick Hubanks was the Chair of our Veteran's Service Committee.

In 1965, we find the first reference to our U.S. Constitution Contest, an event still unique to the Wisconsin Elks as we go into the 21st century.

---

## Chapter 10: 1966-1973

### *Presidents, Secretaries and Convention Sites:*

1966	John Robinson (Kenosha)	Vernon Hopf	Appleton
1967	Leo H. Schmalz (Kaukauna)	Vernon Hopf	Madison
1968	D. H. Everman (Beaver Dam)	Connie Katzenmeyer	Milwaukee
1969	J. G. Chriske (Green Bay)	Connie Katzenmeyer	Green Bay
1970	Maury Pohl (Sheboygan)	Connie Katzenmeyer	LaCrosse
1971	John McDonald (Chippewa Falls)	Connie Katzenmeyer	Wausau
1972	Thomas Pierce (Madison)	Connie Katzenmeyer	Kenosha
1973	Joe Kovacs (Fond du Lac)	Connie Katzenmeyer	Madison

### *~~ In the World at Large...*

Indifference to human life seemed to be the order of the day; Chuck Witmann killed 16 and wounded 31 in Texas while Richard Speck murdered 8 nurses in one night in 1966. Martin Luther King and Robert Kennedy were killed in 1968, the year of the Mai Lai massacre. The Democratic National Convention in Chicago was a 5-block battle zone. In 1969 the Manson Clan murdered five people in California, Ted Kennedy tried to explain what had happened in Chappaquiddick while, twelve months later, there were student shootings at Kent State College. In 1970 the Service module exploded on Apollo 13, as Khadafi became dictator of Libya. In 1972, Israeli athletes were massacred during the Olympic Games in Munich and Governor Wallace was shot. In 1973, OPEC doubled the price of oil, Syria and Egypt launched a surprise attack on Israel, the “Roe vs Wade” decision split American society apart as the Supreme Court legitimized all abortions. In 1973, the United States...defeated at home but not on the field of battle...agreed to withdraw its forces from Vietnam as liberals spit on U.S. troops.

### *~~ In the Wisconsin Elks...*

In 1966, our association paid the expenses for 15 individuals to attend the Loyola University Alcoholic Institute. This was financed out of our State Major Project funds. PSP Al LaFrance was universally endorsed as our next candidate for Grand Exalted Ruler for 1967-68. Nothing became of that endorsement as its wording and issuance became embroiled in Grand Lodge politics.

Thirty-eight lodges attended our annual convention in 1968. Our State Association had grown to 27 committees, a cumbersome organization:

U.S. Constitution	Advisory	Cmt. on House Cmtes.	Veterans Service
Auditing	Major State Project	Youth Activities	Americanism
Lodge Rehabilitation	New Lodge Cmte.	Bowling	Membership/Lapsation
Handicapped Children	Curling	G/L Attendance	Good of the Order
Resolutions	Laws	Ritualistic	Publicity
Most Valuable Student	G/L Relations	Golf	Credentials/Elections
Inter-Lodge Activs.	Recreation	Nat'l Foundation	





Francis Smith, PGER  
State Sponsor 1975-82



PSPS Mel Junion and Jimmy Boex, break  
bread together in a rare, undated photo.



---

In 1968, the 100th Anniversary of Elkdom, fully half of all the U.S. Senators carried Elk membership cards. This was also the year in which PSP Bert Thompson made a motion at our 66th Convention to set up a Cerebral Palsy Program as the “Wisconsin Elks Major State Project”. Passes unanimously, the program ultimately financed UCP Centers in Superior, Wausau, Madison, Green Bay, Milwaukee, Oshkosh, Janesville and Eau Claire.

In 1968, the Grand Lodge established the Hoop Shoot Program, converting it into a mandated national program in 1972. PGER Fred Bohm of Ohio, our Grand Lodge Sponsor, died in 1969 and was replaced by PGER Lee Donaldson of Pennsylvania. Lee was, in 1975, replaced by the much-loved PGER Francis Smith from South Dakota.

“Smitty” had a gift for giving Wisconsin Elks hell... in such a nice way that they felt complimented by his attention.

In 1969, the greatly-respected Rev. Thomas Langer became our State Chaplain and Connie Katzenmeyer became State Secretary. Connie would die in the post in 1980, after being the first recipient of our Elk-Of-The-Year award in 1976. In 1969, Jackie Chriske of Green Bay became the first “poster child” for our State Major Project.

The minutes of the 1970 Annual Convention record an extensive discussion about re-districting our state’s lodges and notes that Wisconsin had the top boy (from Appleton) and the top girl (from Kenosha) in the Elks National Foundation Scholarships. These minutes also record the first reference to the elimination of the “whites only” membership restriction...this record being a part of the State’s Americanism Committee report for its Fall Conference sessions in Rice Lake.

The Convention Proceedings report for 1971 continues in this theme, with many committee reports making it clear that this was the subject in many Committees that year and that the “whites only” clause was universally rejected by the state’s committees. The 1971 Proceedings Report also contains the first known reference to an Exalted Rulers’ March” for the State Major Project.

During the Grand Lodge sessions in New Orleans, State President Tom Pierce was a major speaker in favor of a resolution to drop the “whites only” restriction on membership. Later, SP Pierce affirmed that the Wisconsin Elks were leaders in this cause.

The resolution was defeated in New Orleans and it is a matter of record that during Tom’s year in office, no Grand Lodge Officer attended any Wisconsin Conferences or Convention.



### TOM PIERCE

State President 1972. He was a leader in the national battle to eliminate the “whites only” clause for Elks’ membership.

---

Meanwhile, the Wisconsin Department of Revenue was invoking tax sanctions against any/all fraternal groups which practiced “insidious racial discrimination”. This put Wisconsin Lodges in a cruel dilemma; to obey the Grand Lodge or to obey their own feelings, the law of the land, and the directives of the Wisconsin Department of Revenue. It was a true “no-win” situation.

The IRS challenged at least 5 lodges on whether they had violated discrimination laws and had thus forfeited their tax-exempt status. W.E.A. records for this period include a \$39,000 expense for “legal trouble”...subject not specified.

By 1972, the Sheboygan, Madison and Kenosha lodges had dropped the “whites only” qualification for membership in their Lodge’s By-laws. The Grand Lodge...not happy about this...immediately pulled their charters. The chaos continued into early 1973; Our Spring Convention set aside our rules in order to seat the Sheboygan, Madison and Kenosha delegates. It was also announced that State Elks Officers had been ordered by a Kenosha County judge to comply with (unidentified) specific orders of that court or be cited for contempt. That State Convention also saw the Association passing a resolution to support Drug Awareness and Drug Education programs and pushed all PERS, as voting delegates, to attend that year’s Grand Lodge in Chicago to defeat the “whites only” clause. The Chicago Grand Lodge ended the “whites only” qualification for membership, in our Order, on a nation-wide basis.

The Wisconsin Elks had been leaders in this important change to the B.P.O.E. and can stand in pride about this accomplishment.

---

## Chapter 11: 1974-1981

### *Presidents, Secretaries and Convention Sites:*

1974	A. W. Kowalchyk (Wausau)	Connie Katzenmeyer	Superior
1975	Charles Gurtler (Wisc. Rapids)	Connie Katzenmeyer	Oshkosh
1976	Warren Foster (Baraboo)	Connie Katzenmeyer	Stevens Point
1977	John Elleu (Racine)	Connie Katzenmeyer	Wausau
1978	Charles Bergstrom (Superior)	Connie Katzenmeyer	Green Bay
1979	Wendall Smith (Appleton)	Connie Katzenmeyer	Baraboo
1980	Francis Murphy (Portage)	Herb Militzer	LaCrosse
1981	D. C. Grosenick (Janesville)	Herb Militzer	Wausau

### *~~ In the World at Large...*

Our society was reaping what it had sewn in the 1960s. The Khmer Rouge took over Cambodia; millions were slaughtered. The Patet Lao took Laos and a million more died. North Vietnamese troops marched into Saigon. In 1978, we witnessed the first “in vitro” fertilization, saw films of the 913 who died with Jim Jones in South America, and listened to a Government Panel conclude that conspiracy was likely in the assassination of JFK. Sixty-three Americans became Iranian hostages in 1979, a year which also had massive gasoline shortages and a nuclear accident at Three Mile Island. The Soviets invaded Afghanistan in 1980, convinced that US had been de-fanged by internal strife while, to top off the year, Mt. St. Helens exploded. In 1981, the bloodshed continued; President Reagan and Pope John Paul II were shot. Both survived while Egypt’s Anwar Sadat...the architect of mid-east peace...was assassinated.

### *~~ In the Wisconsin Elks...*

Wisconsin had its first National Hoopshoot Champion (Kaukauna’s Dave Buchanan) in 1974.

Times were tough for Wisconsin Lodges. Wauwatosa Lodge was down, in 1976, to 64 members and surrendered its charter shortly thereafter. By 1974, Sheboygan Lodge 299 had become Lodge 2513 and Madison Lodge 410 had become Lodge 2505. Kenosha Lodge reappeared as Lodge 2523 in 1975. Their old numbers, including that of Milwaukee Lodge 46, were restored by the Grand Lodge in Dallas.

In 1977, thirteen Wisconsin Lodges participated in State Ritualistic Competition, the WEA Officers’ Training Committee was created and a reorganization of the Oconto Lodge was successful.

In 1979, we find the first reference to an “E.R. Ad Hoc Committee”. Father Kevin Cassidy became State Chaplain in 1980 as Father Thomas Langer retired.





State and Grand Chaplain Kevin Cassidy. Candid shots of  
PSPs Foster, Smith and Bergstrom.





---

Fr. Cassidy would become famous for the well-funded collection baskets at services which he held at State Meetings. He donated all of the proceeds to the Elks National Foundation. He would ultimately serve several terms as Grand Chaplain.

The “11 O’Clock Toast” competition was launched in 1975.

In 1978, our Fall Conference was moved to the second weekend in September and the choice of sites was placed in the hands of the President-Elect. In 1978 there were uttered the century’s immortal statement when an (anonymous) Exalted Ruler said “We will open the curtain as soon as we find the key”...leaving all present wondering where one found a key hole in a curtain.

The 1970-1980 decade saw major growth in the lodges of the Northeast District, for reasons we could not discover.

Herb Militzer succeeded Connie Katzenmeyer, another Beaver Dam Elk, as State Secretary until 1987, when Hal Vilar was elected. Connie received our Associations’ first Elk-Of-The-Year award in 1975.

Our State Association restructured its committees in 1981, restructured our State Major Project and created the post of State Historian.



Connie Katzenmeyer, center

---

## Chapter 12: 1982-1989

### *Presidents, Secretaries and Convention Sites:*

1982	Dr. Francis Kruse (Marshfield)	Herb Militzer	Green Bay
1983	Jon Laflin (Neenah-Menasha)	Herb Militzer	Janesville
1984	Arnold Knutson (LaCrosse)	Herb Militzer	Kenosha
1985	Raymond A. Pickarts (Madison)	Herb Militzer	Wausau
1986	Charles Green (Oshkosh)	Herb Militzer	Fond du Lac
1987	Robert G. King (Antigo)	Hal Vilar	Green Bay
1988	Donald J. Sears (Fond du Lac)	Hal Vilar	Superior
1989	Donald J. Slavik (Appleton)	Bob King	Madison

### *~~ In the World at Large...*

1982 witnessed the world's first "successful" heart transplant; the patient died three months later. Over 300 died in 1983 from two bombings in Beirut, Soviet missiles destroyed a Korean airliner and a toxic leak killed 3,000 people in India. In 1985, over 43,000 farmers went bankrupt as land prices fell, the Titanic was found on the bottom of the Atlantic Ocean and the U.S. became a debtor-nation for the first time since 1914. In 1988, an Iranian Jetliner was shot down. Later that year, Pan-Am 103 exploded over Lockerbie Scotland.

In 1989, we saw an astounding reversal of fortunes; the Berlin Wall fell, the last Russian troops left Afghanistan and Poland elected a non-communist government. But this was also the year of the Exxon Valdez, Tianamen Square and a Supreme Court ruling that flag burning is "free speech".

### *~~ In the Wisconsin Elks...*

In 1982, PGER Francis Smith was replaced by PGER H. Foster Sears (Illinois) as our Grand Lodge Sponsor. In 1982 our Association created its Hoop Shoot Committee and built its Drug Awareness Committee a year later. In 1983, our Association began to sponsor an "Elks' Day" at Milwaukee County Stadium, as a way to have fun and to publicize our good works. This event would be held each year until 1989. Wisconsin Elks had national Hoop-Shoot Champions in both 1984 and 1989. The Grand Lodge proposed a mass-insurance program in 1984, which had a rough start. We began support, 1984, of the "Very Special Arts Program", an arts project for handicapped kids. That year, Francis "Bill" Murphy was named "State Elk of the Year" for the 2nd time...the only Elk to be so honored...while State Chaplain Kevin Cassidy was sworn into his additional post of Grand Lodge Chaplain. In 1986, the State Association's annual budget crossed \$100,000 for the first time...with Elks membership in Wisconsin at 22,807 men.





Francis "Bill" Murphy, PSP  
Twice awarded "Wisconsin Elk of the Year"



Elk Don Martin and Poster Child  
Keith Heisler practice their yawns.

---

1987 the “Public Accommodation Wars” had expanded into a call for women to be considered for membership in a Lodge. Kenosha, Madison and Milwaukee Lodges were targeted for tax audits as a by product of these wars. In 1988, Keith Heisler became our Cerebral Palsy Poster Child...a lost tradition restarted after a lapse of a decade or more. We changed State dues from \$1 to \$1.50 per member. This year also saw the creation of the “Wisconsin Rapids Bike Ride for the Elks National Foundation”. Under the leadership of PSP Harvey Gygi, PER Lance Pliml and many “Rapids” Elks, this has become an event involving Elks from all over our State Association and has raised tens of thousands of dollars for the National Foundation.

In 1989, the Grand Lodge reorganized Wisconsin from 4 to 6 districts in order to reduce travel time for its District Deputies. The Central and East-Central Districts were created. With the stroke of a pen, the Northeast District lost 40% of its members and four of its more-active lodges. This was an almost mortal wound which that District struggles to overcome, to this day. PSP Bob King began, in 1989, his 10-year term as State Secretary.



Bikers and their Support Crews gather before the start of a Wisconsin Elks E.N.F Bike Ride at Wisconsin Rapids Lodge.

---

## Chapter 13: 1990-1997

### *Presidents, Secretaries and Convention Sites:*

1990	Harvey J. Gygi (Wis. Rapids)	Bob King	Milwaukee
1991	Reinhard Palm (Sheboygan)	Bob King	Neenah-Menasha
1992	Marlin Herman (Waukesha)	Bob King	Wausau
1993	Wayne Pickarts (Madison)	Bob King	Janesville
1994	William Forrest (Wausau)	Bob King	Superior
1995	James Meyer (Watertown)	Bob King	Oshkosh
1996	Keith Simmons (Walworth-Lakeland.)	Bob King	Stevens Point
1997	David DeRosier (Milwaukee)	Bob King	Wausau

### *~~ In the World at Large...*

In 1990, the Hubble Telescope was launched, the two Germanys were united and Saddam Hussein invaded Kuwait. A few months later we witnessed the break-up of the U.S.S.R. and the liberation of Kuwait in “Operation Desert Storm”. But, in the same year, Milwaukee’s Jeffrey Dahmer confessed to eleven murders. 1993 was a very tough year; the World Trade Center was bombed, the Branch Davidian compound was burned in Waco, the great floods of the Mississippi River destroyed 55,000 homes and the “Storm of the Century” left \$3 billion in damages as it smashed into the east coast. In 1994, Republicans gained control of Congress for the first time since 1946. The 1995 bombing in Oklahoma City killed 168. A meteorite found in Antarctic ice, in 1996, indicted the possibility of life on Mars. Mother Theresa died in 1997, the year in which Scottish researchers cloned a sheep.

### *~~ In the Wisconsin Elks...*

Our membership losses mounted; in 1991 over 1,400 Elks were lost in Wisconsin as we dropped to 19,779 members. The losses continued at a slower pace but Kenosha surrendered its charter in 1993, after several years of severe financial stress. The Hudson Lodge surrendered its charter for the same reasons in 1995.

There was, in 1991, a \$1.5 million bequest from the Schoen Estate to the Elks National Foundation. This led, through the hard work of PSP Francis “Bill” Murphy, to the introduction of the “Wisconsin Elks Benevolent Trust” at our 1992 Convention. With new infusions of money from Wisconsin Elks and their families, this fund continues to finance our charitable programs in the same way as does the monies from the Elks National Foundation.

This is a good place to note that Wisconsin, since 1990, is rarely below the top five states in the nation, in per-capita donations to the Elks National Foundation. Our donations to the Wisconsin Elks’ Benevolent Fund have not jeopardized that record at all.

---

In 1992, Gary Gasper of Sheboygan Lodge became the first Elk in the 80-year history of the State Elks' Bowling Tourney to fire a perfect game. At our May, 1994 Convention, the State Association changed the direction of its Major Project, starting a Respite Care Facility in Pioneer Camp at Wawbeek. The ribbon cutting for this new Elks charitable facility occurred in 1995.

In 1994, Kenneth Sherman was named "State Elk of the Year", due in large part to his discovery, and our recovery, of over a hundred thousand dollars which had been embezzled from our State Major Project. Not a dollar was lost but the experience caused our State Association to create a stronger Audit Committee to monitor all of its financial activities. Gerald Crouse also had a strong role in this investigation and became Wisconsin's "Elk of the Year" in 1997. Gerald was the only Wisconsin Elk to become State President \*AFTER\* achieving Elk-Of-The-Year status.

The 1994 Newsweek article "Cry of the Wounded Elk" highlighted the attack on Lodges, via the "Public Accommodation" laws and local liquor licenses, which until then were allowed to serve the general public and were prohibited from extending Elks membership to women.

The 1995 Grand Lodge session allowed women to become Elks, revised the Ritual Manual to include the feminine gender and reinforced the ban on serving the public. Wisconsin lodges were slow to take advantage of the availability of ladies as new Elks. The Two Rivers and Oconto lodges were the exceptions as they substantially grew their memberships. The lock-down of bar and restaurant service to the public had a significant impact on the smaller lodges. Several of them sold or sub-leased their facilities because they had too few members for an "Elks only" club to be financially solvent. PGER Robert J. Sabin replaced the deceased H. Foster Sears as Wisconsin's Sponsor.

In 1996, Kaukauna's Andy Borchard became national Hoopshoot Champion. That year also saw a change in the investment objectives of the Wisconsin Elks Benevolent Fund...from "Growth" to the "Income". This change spear-headed by PSPs Keith Simmons and Dave DeRosier, facilitated a tremendous expansion of our charitable programs.



“Never Forgotten...never foresaken..”  
Leon Rondou, Mux Clark, Alex Pauze, Floyd Dahlke.

---

## Chapter 14: 1998-2003

### *Presidents, Secretaries and Convention Sites:*

1998	Bob Hackl (Two Rivers)	Bob King	Fond du Lac
1999	Milt Swantz (Fond du Lac)	Ken Johnson	Sheboygan
2000	John Bennett (Ashland)	Ken Johnson	Watertown
2001	Gerald Crouse (Waukesha)	Ken Johnson	Fond du Lac
2002	John Belany (Rice Lake)	Ken Johnson	Wausua
2003	Ken Thomack (Kaukauna)	Ken Johnson	Watertown

### *~~In the World at Large...*

Bill Clinton was impeached in 1998 while U.S. embassies in Kenya and Tanzania were bombed; 257 died. In 1999, the Dow Jones Industrial Average reached 10,000 points. This was the year of “irrational exuberance”, but a day trading amateur killed nine in Atlanta as the market went against him. The year 1999 also saw the tragedies of Columbine High School, where 15 were killed while an earthquake in Turkey took 17,000 lives. The stock market tanked in late 2000 and was flat in 2001, as millions of people watched their retirement funds lose billions of dollars. “Rolling Blackouts” in several areas of the country emphasized an energy crisis which raised ominous warning about our future. Terrorists flew hijacked passenger planes into the World Trade Center and the Pentagon; thousands died as the world watched in horror. On September 11, 2001, Americans became as unified as they had been on Dec. 7th, 1941.

### *~~ In the Wisconsin Elks...*

The Sturgeon Bay Lodge merged with the Green Bay Lodge in 1998, the year in which the Wisconsin Elks scored first, nationally, in New Pledge-Points for the Elks National Foundation. Bob King retired as State Secretary and was replaced by the very capable Ken Johnson.

In 1999, a “Centennial Committee” began organizing the events to be held in 2002...our 100th anniversary. Wisconsin Elks continued their nation-leading donations to the Elks National Foundation. They continued to expand their donations to the Wisconsin Elks Benevolent Fund, to the Wisconsin State Major Project camps for handicapped children and for Respite Care, and to an ever-expanding list of locally-funded Elks charities.

In 2001, Wisconsin Elks scored a “triple-header” as their students took the 1st place boy’s award (sponsored by the Oshkosh Lodge), the 2nd place girl’s award (again via Oshkosh) and the 3rd place girl’s award (sponsored by Platteville)...a total of \$120,000 in scholarship awards for these three students. Two Rivers’ Jean Blahník and Rice Lake’s Ora Payne became the first lady E.R.s in the state.





“God Bless the Ladies”. Past First Ladies of the Wisconsin Elks Association gathered...more than a decade apart.. for two historic pictures which span our years from 1960 to 1998

---

Thus...we begin our second century of service.....

The Wisconsin Elks Association has been maintained by thousands of Elks who have served on State Committees, the hundreds who have served in State Offices and the tens of thousands of Elk families who have labored together to make Elkdom in Wisconsin a source of pride...and a heritage...and an example for the Elks families of the future.

The future of Elkdom, in Wisconsin and elsewhere, is in doubt. The generations of “givers” who had formed and nurtured the BPOE are gradually dying off. Behind them are generations which may be inclined to be more self- and family- absorbed than their altruistic ancestors. The Wisconsin Elks created its last new Lodge, Walworth-Lakeland, in 1961. Since then our Association has closed Lodges in Kenosha, Hudson, Wauwatosa, Sturgeon Bay and LaCrosse. In almost every instance, it was “club” issues which destroyed these Lodges.

The Lodges which are primarily “social” in nature are decaying. The Lodges which use local charitable work as their primary focus are, often, expanding their memberships and activities. It can be noted that, historically, as our total state membership has trended downward, the record of per-capita donations and the record of total community-service hours has gone up.

It can be truly said that Wisconsin Elks are some of the most charitable families in the nation. A reading of their accomplishments, over the past 100 years, shows their generosity of time, of effort, of personal wealth, of care for the less fortunate.

The challenge “To carry others’ burdens” has been well-met by the Wisconsin Elks during their first 100 years. We are confident that this challenge...this honorable calling...will be equally served by the Wisconsin Elks of the future.



---

## Appendix: A Peek Into The Past

The following pages are primarily copied from “Elkdom in Wisconsin, 1886-1952”. This gold-covered book was created by a “Committee On Historical Publication” in 1952. It celebrated the 50th anniversary of the Wisconsin Elks Association. We think that you will be fascinated by what your lodge buildings looked like 50 years ago.. and what your predecessors thought about their past...and about their future.

Where appropriate we have added a few comments especially for the lodges which existed in 1952 but have surrendered their charters since then.

### Former Wisconsin “Elk of the Year” Recipients

1975	Connie Katzenmeyer	1976	Bill (Tiny) Uthmeier
1977	Fr. Francis Langer	1978	PGER Francis Smith
1979	Francis Brandl	1980	Jim Boex
1981	Francis (Bill) Murphy	1982	Robert Hanna
1983	Robert King	1984	Fr. Kevin Cassidy
1985	Francis (Bill) Murphy	1986	Arnie Knutson
1987	Jack Froom	1988	Earle Sievwright
1989	Alex Pauze	1990	Don Grosenick
1991	Jim Meyer	1992	Roger Cielinski
1993	Harvey Gygi	1994	Ken Sherman
1995	Ron Glaeser	1996	Carl Knuese
1997	Gerald Crouse	1998	Arnie Beimborn
1999	Richard Nolan	2000	Lance Pliml
2001	Keith Simmons		



PGER Robert Sabin, center, is our State Sponsor. He replaced PGER H. Foster Sears, right, upon his death. They are shown visiting with (then) SP Don Slavik and with Marinette Elks.

---

## Charter Data - Wisconsin Elks Lodges

<u>Lodges</u>	<u>Date Created (Lost)</u>	<u>Sponsoring Lodge</u>	<u>Charter Members</u>
46 - Milwaukee	5/15/1886	Chicago	21
57 - Fond du Lac	12/12/1886	Milwaukee	47
137 - Ashland	7/10/1890	Superior (1900)	32
248 - Wausau	12/19/1892	Fond du Lac	18
252 - Racine	12/19/1892	(unknown)	47
254 - Janesville	1/30/1893	(unknown)	20
259 - Green Bay	3/15/1893	Fond du Lac	28
292 - Oshkosh	12/4/1894	Fond du Lac	79
299 - Sheboygan	6/6/1895	Milwaukee	32
337 - Appleton	5/16/1896	Fond du Lac	12
400 - Waukesha	12/8/1897	Fond du Lac	47
402 - Eau Claire	12/28/1897	Fond du Lac	25
403 - Superior	1/4/1898	Duluth	44
410 - Madison	3/11/1898	Fond du Lac	61
641 - Stevens Point	12/26/1900	Wausau	31
662 - Antigo	2/21/1901	Ashland	37
665 - Marshfield	2/26/1901	Stevens Point	36
666 - Watertown	3/22/1901	Madison	44
675 - Portage	3/26/1901	Watertown	30
676 - Neenah/Men.	3/20/1901	Appleton	30
687 - Manitowoc	4/19/1901	Sheboygan	29
688 - Baraboo	4/17/1901	Madison	43
693 - Wisc. Rapids	4/24/1901	Stevens Point	40
864 - Beloit	6/16/1903	Janesville	51
887 - Oconto	12/17/1903	Green Bay	16
962 - Kaukauna	5/6/1905	Neenah/Menasha	25
1313 - Marinette	5/15/1914	Green Bay	21
1326 - Chipp. Falls	10/20/1915	Eau Claire	13
1380 - Two Rivers	1/10/1920	Manitowoc	66
1441 - Rice Lake	4/12/1922	Chipp. Falls	57
1460 - Platteville	4/2/1923	Galena	39
1540 - Beaver Dam	7/12/1928	Watertown	49
2201 - Walw. Lakeland	5/22/1961	Janesville	76

### Former Wisconsin Lodges

<u>Lodges</u>	<u>Date Created (Lost)</u>	<u>Sponsoring Lodge</u>	<u>Charter Members</u>
300 - LaCrosse	4/6/1895 (2000)	Fond du Lac	40
598 - Rhinelander	6/19/1900 (1946)	Wausau	24
640 - Hudson	1/3/1901 (1995)	Ashland	32
696 - Merrill	5/17/1901 (1945)	Wausau	40
750 - Kenosha	1/4/1902 (1993)	Racine	86
2076 - Sturg. Bay	1959 (1998)	Green Bay	?
(?) - Wauwatosa	1960 (1977)	(unknown)	?

---

## *Milwaukee - 46*

*Chartered December 12, 1886*



### CHARTER DATA:

Date of Dispensation - May 15, 1886

Date of Institution - May 15, 1886

Installing Officer - Simon Quinlan

Sponsoring Lodge - Chicago Lodge No. 4

### CHARTER MEMBERS:

Harry St. Ormand

Dr. Linton Flynn

Simon L. Stein

Joseph Clauder

Henry Thiele

Ben G. Lennox

S. S. Merrill

A. M. Ingersoll

Ward B. Sheardown

John L. Ferguson

James Barker

P. J. Shannon

Col. Charles A. King

Col. E. H. Cawker

Col. A. A. Watrous

John Sundin

P. L. Marsh

Leon Wacksner

Jacob Litt

John S. Raynor

Joseph C. Baird

---

## FIRST LODGE OFFICERS:

Exalted Ruler . . . . .	James Barker
Esteemed Leading Knight . . . . .	Dr. Lynton Flynn
Esteemed Loyal Knight . . . . .	Ben G. Lennox
Esteemed Lecturing Knight. . . . .	Samuel Howard
Secretary . . . . .	George Nicolai
Treasurer . . . . .	Ward B. Sheardown
Tiler. . . . .	Charles W. Fistler
Inner Guard. . . . .	Frank J. Crosby
Chaplain . . . . .	Col. J. A. Watrous
Esquire. . . . .	Gen. Charles A. King

Milwaukee Lodge, as benefits the pioneer Elks lodge of the state, has for years been one of the strongest and largest links in the chain of Wisconsin Elks lodges. It was first organized in 1886, became defunct in 1890 and was then reorganized in 1894 on a permanent basis.

First meetings on the lodge were held over Henry Wehr's Restaurant, located at No. 1 Grand Avenue, the site which is today occupied by Gimbel's department store. In 1921 the lodge purchased the land for its present magnificent location, on East Wisconsin Avenue, and laid the cornerstone for the new clubhouse on June 6, 1924. The building was completed and dedicated on September 5, 1925 at a cost of \$1,940,000. It is one of the finest Elks buildings in the United States. The mortgage was burned in a memorable ceremony held on February 6, 1944.

Twice in its history Milwaukee has been host to the Elks National - in 1901 and again in 1933. It has played host to the State Convention three times. Another highlight of each Elks year at Milwaukee is the annual visit of the Grand Exalted Ruler, when Milwaukee lodge is the focal point for Elks from every lodge in the state.

Milwaukee Lodge sponsors the nationally known Elks Plug Drill Team and Elks Male Chorus and a 40 piece Military Band.

## UPDATE, 9/1/2001:

The Milwaukee Lodge had a peak membership, in excess of 8,400 Elks, in 1927. It now occupies an extensive facility on the far North side of Milwaukee. The Band and Chorus are gone but the Milwaukee Plugs are still very active. Notice that the Milwaukee Lodge used to receive a visit, each year, from the current Grand Exalted Ruler...a practice discontinued at some unknown date after 1952.

---

## *Fond du Lac - 57*

*Chartered December 12, 1886*



### CHARTER DATA:

Date of Dispensation -

Date of Institution - December 12, 1886

Installing Officer - Simon Quinlan

Sponsoring Lodge - Milwaukee No. 46

### CHARTER MEMBERS:

H. H. Dodd

T. F. Mayham

J. C. Heitbahn

J. W. Hiner

J. W. Watson

F. A. Bartlett

C. H. Benton

G. C. Ginty

T. W. Spence

H. B. Harshaw

A. C. Blankenberg

F. B. Hoskins

J. A. Merryman

F. S. Wiley

F. S. Wiley

F. M. Givans

B. F. Hill

D. F. Crandall

J. T. Greene

C. A. Galloway

G. C. Benton

(27 others -  
names not available)

---

## FIRST LODGE OFFICERS:

Exalted Ruler . . . . .	J. C Heitbahr
Esteemed Leading Knight . . . . .	H. H. Dodd
Esteemed Loyal Knight . . . . .	J. A. Merriman
Esteemed Lecturing Knight . . . . .	J. W. Hiner
Secretary . . . . .	F. M. Givans
Treasurer . . . . .	B. F. Hoskins
Tiler . . . . .	B. F. Hill
Inner Guard . . . . .	D. F. Crandall
Chaplain . . . . .	Dr. F. S. Wiley
Esquire . . . . .	James T. Greene
Trustees . . . . .	C. A. Galloway - Gilson C. Benton

While Fond du Lac was not the first lodge to be chartered in the state, it holds the distinction of having the longest continuous existence - sixty-six years at this writing.

The first meeting of the lodge was held in the Odd Fellows hall. On May 2, 1887, it moved to its own quarters in the Armory block on Main Street, then to new rooms on Forest Avenue in 1891 and remained there until the present clubhouse was built in 1903, its cornerstone being laid on August 10 of that year and dedicated on May 21, 1904. Constant modernization of the clubhouse and an enthusiastic, growing membership have marked the club from that time on.

Fond du Lac has been host to the state convention three times - in 1904, 1918 and 1935. It takes an active and interested part in community affairs and its membership has furnished many active workers in the state association. A memorable occasion in the lodge history was the Wisconsin visit of Grand Exalted Ruler John S. McClelland in 1942 when No. 57 was a gracious host to representatives of all the Wisconsin lodges.

## UPDATE, 9/1/2001:

Still in the building pictured, opposing page, in 1952, the Fond du Lac Lodge has over 700 members. The Lodge is a frequent host of State Conferences and Conventions. The Lodge has an excellent reputation in its county and...with the assistance of that county...recently supplied a vehicle for use at our Handicapped Childrens' Camp.



---

## *Ashland - 137*

*Chartered July 12, 1900*



### CHARTER DATA:

Date of Dispensation - March 16, 1900

Date of Institution - March 29, 1900

Installing Officer - A. F. Warden

Sponsoring Lodge - Superior No. 403

### CHARTER MEMBERS:

D. W. Van Vleck

M. E. Dillon

W. S. Cate

C. A. Ruprecht

R. W. Parsons

E. E. Tennant

A. W. Sanborn

E. F. Gleason

Wm. H. Chaple

L. M. Dickerson

F. D. Brennan

Howard Benton

C. H. Clark

J. Donnelly

John Elliott

C. B. Simpson

Wells M. Ruggles

E. W. Belknap

W. B. Rea

A. W. McLeod

S. H. Lien

M. H. Brown

H. S. Prudhamer

M. J. Hayden

Sam Fifield

W. R. Durfee

Geo. F. Merrill

R. C. Murray

A. A. Hobbs

H. E. Donnelly

L. A. Cartier

D. E. Cartier

---

## FIRST LODGE OFFICERS:

Exalted Ruler . . . . .	M. E. Dillon
Esteemed Leading Knight . . . . .	E. E. Tennant
Esteemed Loyal Knight . . . . .	D. E. Cartier
Esteemed Lecturing Knight . . . . .	E. F. Gleason
Secretary . . . . .	R. C. Murray
Treasurer . . . . .	W. S. Gate
Tiler . . . . .	Frank Brennan
Esquire . . . . .	A. A. Hobbs
Trustees . . . . .	E. W. Belknap - A. W. Sanborn - A. W. McLeod

While the early history of Ashland is shrouded in some mystery, it appears that the lodge was first chartered July 10, 1890. This charter was withdrawn, for reasons unknown, in 1892. In 1900, the lodge was reorganized as No. 558 and chartered under that number. In July, 1909 by action of the Grand Lodge the original charter number of 137 was restored to Ashland lodge. Today it is strong link in the Wisconsin chain.

The first lodge meetings were at Brownstone Hall, located on Vaughn Avenue. Early attention was given to the problem of a suitable clubhouse and plans were drawn up in the fall of 1905. The building was started in the spring of 1906 and dedicated November 21, 1906 and the mortgage was burned on November 24, 1916. In 1944 the lodge acquired a golf course and clubhouse for the benefit of the membership.

Ashland will be remembered as the host city to the founding of the Wisconsin Elks Association in 1902 and entertained the Fortieth Anniversary Convention in August, 1942. Visiting Elks remember Ashland lodge as genial host on these and many other occasions.

## UPDATE, 9/1/2001:

The Ashland Lodge has, since 1952, moved to a modern facility alongside its' own golf course. Now with over 500 members the lodge will host the Wisconsin Elks in its' Centennial Celebration. The lodge has an excellent reputation in its' local area and continues to provide leaders for our State Association.



---

## Wausau - 248

*Chartered December 19, 1892*



### CHARTER DATA:

Date of Dispensation -

Date of Institution - December 19, 1892

Installing Officer - H. H. Dodd

Sponsoring Lodge - Fond du Lac No. 57

### CHARTER MEMBERS:

George H. Rice

Frank Kelly

A. L. Kruetzer

L. A. Pradt

F. G. Dana

A. V. Gearhart

F. L. Bliss

John Fisher

W. H. Wiley

A. E. Witting

C. T. Powers

Robert Clark

Walter Alexander

H. E. McEachron

A. N. Sicard

C. S. Gilbert

J. D. Womer

C. A. Hoflinger

---

## FIRST LODGE OFFICERS:

Exalted Ruler . . . . .	E. B. Sanders
Esteemed Leading Knight . . . . .	Louis A. Pradt
Esteemed Loyal Knight . . . . .	George H. Rice
Esteemed Lecturing Knight . . . . .	Andrew L. Kreutzer
Secretary - Treasurer. . . . .	A. N. Sicard
Tiler . . . . .	H. E. McEachron
Inner Guard . . . . .	Wm. C. Davenport
Chaplain . . . . .	A. V. Gearhart
Esquire . . . . .	Walter Alexander
Trustees . . . . .	L.A. Pradt - D. D. Flauner - J. D. Womer

Wausau lodge has grown and prospered through the years and today rates as the outstanding fraternal and social club of its city. Despite some early “growing pains”, a staunch group of Elks has always kept Wausau moving forward to its present position.

The lodge first met in German Hall and then in various temporary quarters in the Wisconsin Valley Trust Company building, the Cawley building, Weinfeld building, Ruder building, Alderson home and Odd Fellows hall. After some years the property at the northwest corner of Scott and Fifth streets was purchased and the home located there was used for some time. In 1923 the present structure was built at a cost of over \$100,000. Frequently renovated and improved, it now boasts lounge, library, an excellent dining room, two modern and beautiful bars and six bowling alleys.

Wausau has thrice been host to association conventions and has contributed many leaders to the association. It has been consistently strong in upholding the Grand Lodge and association program and made an outstanding record in war work programs during World War II.

## UPDATE, 9/1/2001:

The Wausau Lodge continues to operate in its Scott Street facility...which has been extensively modernized over the years. With over 800 members, this Lodge is often the host for our Elks State Hoopshoot Championships.

---

## *Racine- 252*

*Chartered June 15, 1893*



### CHARTER DATA:

Date of Dispensation -

Date of Institution - December 19, 1892

Installing Officer - H. H. Dodd

Sponsoring Lodge - Grand Lodge

### CHARTER MEMBERS:

Allen B. Northrup	W. F. Billings	John M. Falvey	Henry M. Wallis
E. C. Deane	George L. Eddy	F. L. Clifford	Richard T. Robinson
B. B. Blake	F. W. Deacon	James McLaren	John W. Knight
Henry F. Tyrell	J. E. Dodge	E. B. Belden	Clarence J. Richards
W. J. Hopkins	Fred Bailey	J. E. Bush	John W. Owen
C. R. Carpenter	L. J. Elliott	C. J. Ticknor	Frank G. Ticknor
Erney D. Wright	W. E. Hall	O. M. Pettit	H. J. Rogers
E. A. Tostevin	E. Russell	David Griswold	Henry A. Cooper
J. A. Spencer	L. P. Monroe	Jackson I. Case	C. M. Hambright
John P. Converse	W. B. Dutton	D. Thronson	Frank K. Bull
Frank M. Roberts	J. S. Hendrie	J. D. Sarles	Charles A. Armstrong
Harry L. Pugh	H. E. Redmond	John W. O'Harrow	

---

## FIRST LODGE OFFICERS:

Exalted Ruler . . . . .	E. C. Deane
Esteemed Leading Knight . . . . .	B. B. Blake
Esteemed Loyal Knight . . . . .	L. J. Elliott
Esteemed Lecturing Knight . . . . .	H. F. Tyrell
Secretary . . . . .	W. J. Hopkins
Treasurer . . . . .	C. R. Carpenter
Tiler . . . . .	R. T. Robinson
Esquire . . . . .	W. B. Dutton
Trustees . . . . .	J. E. Belden - E. D. Wright - E. B. Belden

Racine lodge, since its inception in 1893, has been a civic leader in the community and an active participant in all projects of the Grand Lodge and the state association.

The first lodge quarters were in Castle Hall. In 1899, the lodge moved to the Carton building at Fifth and Main, which they occupied for a number of years. While plans for a new Elks club building were being laid, the lodge sojourned briefly in the Lawrence building. In 1913, the beautiful new clubhouse at Sixth and Lake was built and dedicated. Periodic modernization has kept this building up-to-date. It is a gathering place for many worthwhile civic meetings in addition to harboring Elks activities.

Racine lodge also sponsors a City Wide Youth Band, consisting of 70 pieces. They are boys and girls selected from all Racine High Schools. The lodge has furnished them with new uniforms at a cost of \$4,500. They have won many prizes in the State and the Chicago Music Festival.

The lodge awards a \$300 scholarship each year to an outstanding high school student; who may borrow \$250 each year on a non-interest bearing note while attending college.

No. 252 has a reputation of being a warm humanitarian institution, with a high standing in the community and rendering wide spread charitable service.

## UPDATE, 9/1/2001:

Racine lodge has, since 1952, dropped to 99 members and has moved to a smaller, but more modern facility. It supports its charitable activities via locally-popular Bingo events.

---

## *Janesville - 254*

*Chartered January 30, 1893*



### CHARTER DATA:

Date of Dispensation -  
Date of Institution - January 30, 1893  
Installing Officer - H. H. Dodd  
Sponsoring Lodge -

### CHARTER MEMBERS:

Edwin Fifield	W. P. Sayles	F. B. Smith
T. W. Goldin	G. M. McKey	O. D. Rowe
C. D. McGowan	F. C. Cook	Al Schaller
W. E. Evenson	J. G. Rexford	F. H. Jackman
Geo. Sutherland	W. L. Carl	M. G. Jeffris
C. A. Potter	O. H. Fethers	Wm. B. Wheeler
C. B. Conrad	B. A. Baldwin	

### FIRST LODGE OFFICERS:

Exalted Ruler . . . . . O. H. Fethers  
(Record not clear on balance of officers)

---

The Janesville lodge was germinated one stormy winter morning in 1893 at Prentice and Evenson's drug store, then a gathering place for Janesville's prominent business men. Ogden fethers, an attorney, seems to have been the prime mover and was selected as first exalted ruler. Names of the other early officers are not clear but Brothers Richarson, Cook, Prentice and Evenson, the first five signers, were also probably among the first officers.

The first lodge meeting was held on February 14, 1893 in Knights of Pythias hall on Milwaukee Street. The lodge moved to its present location in 1908 and purchased the building, which contains income producing property on the ground floor, in 1920.

The lodge home has been without a mortgage or other indebtedness since 1938. Frequent remodeling has kept the club rooms thoroughly modern.

An active Elks membership supports many civic, charitable and youth activities in the Janesville community.

The early Elks in Janesville held one big "Ladies Night" party each year which apparently was a high spot of the local social season. The first such party was held in the Knights of Pythias hall and had the local citizenry "ga-ga" with its splendor, which included uniformed colored waiters - borrowed from a Northwestern railroad dining car for the occasion. Another early activity which helped establish the Janesville Elks firmly was a successful street fair in the early 1900's.

Janesville entertained the state association convention in 1943 as part of the lodge's celebration of its fiftieth anniversary. While this was a hard working "war" convention, it is still remembered as a high spot in Janesville's history.

---

## *Green Bay - 259*

*Chartered March 15, 1893*



### CHARTER DATA:

Date of Dispensation -

Date of Institution - March 15, 1893

Installing Officer - H. H. Dodd

Sponsoring Lodge - Fond du Lac

### CHARTER MEMBERS:

Frank E. Murphy

L. W. Hoffman

L. G. Reber

P. C. Hart

S. W. Champion

H. M. Bell

H. M. Beck

Geo. O. Spear

F. E. DuBoise

J. B. Theisen

Jas. H. Elmore

S. J. Murphy, Jr.

E. Boaler

F. T. Belsch

E. P. Parish

H. W. Hart

F. W. Taylor

F. E. Snyder

L. F. Pease

M. J. Heath

W. R. Mathews

C. T. Kimball

E. L. Tyrell

O. N. Oldenburg

Fred Schuette

H. B. Baker

E. A. Arthur

J. N. McCunn



---

## FIRST LODGE OFFICERS:

Exalted Ruler . . . . .	E. P. Parish
Esteemed Leading Knight. . . . .	S. J. Murphy, Jr.
Esteemed Loyal Knight . . . . .	J. N. McCunn
Esteemed Lecturing Knight. . . . .	E. Alden Arthur
Secretary. . . . .	F. W. Taylor
Treasurer . . . . .	Geo. O. Spear
Tiler . . . . .	L. F. Pease
Esquire . . . . .	F. E. Murphy
Trustees . . . . .	Ed Boaler - Charles Kimball - H. M. Bell

It was only twenty five years after the founding of the Benevolent and Protective Order of Elks that a group of 28 young Green Bay residents banded together for the purpose of founding a subordinate Elks Lodge. Green Bay Lodge No. 259, therefore, proudly regards itself as one of the pioneer lodges of Wisconsin and its active history spans well over two-thirds of the existence of the Order itself.

The Green Bay lodge was also among the first in the state to erect a club-house. After eight years of meetings in the Knights of Pythias hall, the club in 1901 purchased the lot on which the present club building stands for \$3,000 - without finances in its treasury. The lodge then let a contract for construction of a \$15,000 clubhouse, and placed a mortgage of \$25,000 against the real estate and building, with bonds to be purchased by the membership. The purchase of such bonds then constituted the initiation fee for new members.

The club was formally opened and dedicated on February 22, 1902, and little more than 20 years later - on November 24, 1922 - the bonds had been paid off or surrendered for life memberships and the mortgage satisfied.

During its history, the lodge has played host to five state conventions, in 1911, 1916, 1926, 1940 and 1952.

Green Bay lodge has shown steady growth in membership down through the years and at this time has a roster of slightly over fourteen hundred members.

## UPDATE, 9/1/2001:

From its above-mentioned 1,400 members in 1952, this lodge now has 224 Elks. It has moved from its downtown facilities to a modern site in a Green Bay suburb. This lodge gave us six State Presidents, more than any other Lodge.



---

## *Oshkosh- 292*

*Chartered November 11, 1895*



### CHARTER DATA:

Date of Dispensation -

Date of Institution - December 4, 1894

Installing Officer - J. W. Watson

Sponsoring Lodge - Fond du Lac No. 57

### CHARTER MEMBERS:

B. C. Gudden

Fred C. Hom

Sam Eckstein, Jr.

W. J. McKoy

L. P. Allen

E. G. Tullledge

C. B. Washburn

E. W. Weisbrod

C. C. Finney

P. L. Marden

C. W. Oviatt

W. H. Cardiff

Fred Athearn

T. Neville

A. O. Kuehmsted

E. W. Paur

P. D. Kraby

W. A. McIntyre

E. P. Finch

M. T. Battis

F. E. Waite

J. H. Wall

A. E. Thompson

W. J. Hay

J. E. Williams

S. W. Hollister

J. C. Thompson

John T. Lloyd

F. W. A. Brown

Frank Heilig

S. H. Gulliford

W. H. Englebright

L. A. Bauman

G. W. Burnell

R. C. Brown

H. C. Derksen

L. W. Wood

G. A. Smith

Cook Ely

---

J. F. Kluvin	Geo. T. Brown	C. M. Hahn
H. W. Toothaker	T. R. Frentz	M. H. Eaton
M. R. Streeter	Neil Merrill	J. J. Stevenson
Wm. Decker	Wm. Brand	N. A. Greenlaw
A. M. Van Kaas	W. F. Wyman	R. B. Evans
W. H. Bass	John Hicks	Henry Dehde
H. L. Mattis	H. E. Hayes	Frank E. Grove
Frederic Felker	John V. Bunn	W. A. O'Donnell
Ed Cole	Geo. A. Buckstaff	D. G. Hathaway
F. B. Barnes	Robt. Brand, Jr.	H. A. Atwood
E. H. Hough	Chas. Ollerich	H. I. Weed
W. C. Ruckman	W. H. Bell	A. Ripley
W. H. Wyman	H. R. Birely	F. C. Walker
	W. R. Hill	

### FIRST LODGE OFFICERS:

Exalted Ruler . . . . .	W. A. Gordon
Esteemed Leading Knight. . . . .	C. R. Boardman
Esteemed Loyal Knight . . . . .	W. C. Kimball
Esteemed Lecturing Knight . . . . .	F. J. Libbey
Secretary . . . . .	John West
Treasurer . . . . .	T. R. Frentz
Tiler. . . . .	J. V. Bunn
Inner Guard . . . . .	P. L. Marden
Esquire . . . . .	W. A. McIntyre

The Oshkosh lodge was first organized as No. 289. Later when the charter arrived, December 4, 1894, it was learned that the number was 292. Meetings were held in the K.P. Hall on the third floor over what is now Spoo & Son clothing store. After ten months, meeting rooms were rented over the J. N. Hoaglund Grocery (later Evans and now the J&R Motor Supply). Smaller rooms on the Main Street side served as card rooms and “refreshment” headquarters. This lasted until 1903, when fire damaged the building. Meetings were then held temporarily in the Odd Fellows Hall on Algoma.

In the fall of 1903, the lodge moved into large quarters on the second floor at Main and Washington Streets.

The present club house was completed and initiated with an Open House on New Year’s Day, 1914.

### UPDATE, 9/1/2001:

Oshkosh lodge has, since 1952, moved several times and is now in a beautiful facility. This lodge is usually the host for our State Soccer Shootout Championships.

---

## *Sheboygan - 299*

*Chartered July 10, 1895*



### CHARTER DATA:

Date of Dispensation -

Date of Institution - July 16, 1895

Installing Officer - Samuel Martin

Sponsoring Lodge - Milwaukee No. 46

### CHARTER MEMBERS:

G. B. Mattoon

Frank Geele

G. Schrage

F. Benfey

G. Huette

O. Foeste

H. Imig

L. Roenitz

J. End

O. Newmeister

F. Roenitz

E. Mattoon

F. Thayer

O. Trowbridge

H. Thomas

G. Hart

O. Ballschmieder

Theo. Benfey

P. Koehn

W. Kowalke

F. H. Zschetzsche

J. A. Winter

A. Boales

A. Mahlendorf

J. P. Reiss

G. Karste

Dr. O. B. Bock

R. L. Whitehill

Adolph Pfister

W. G. End

R. Haysen

---

## FIRST LODGE OFFICERS:

Exalted Ruler . . . . .	R. L. Whitehill
Esteemed Leading Knight. . . . .	Dr. O. B. Bock
Esteemed Loyal Knight. . . . .	H. F. Roenitz
Esteemed Lecturing Knight. . . . .	J. A. Winter
Secretary . . . . .	Adolph Pfister
Treasurer. . . . .	A. Mahlendorf
Tiler . . . . .	W. G. End
Inner Guard. . . . .	R. G. Hayssen
Chaplain. . . . .	A. Boales
Esquire . . . . .	John R. Reiss

Sheboygan lodge has nurtured many active Elks who have left their mark in the community, the state and the nation. The state association owes much of its present success to the two “B’s” from Sheboygan - Charley Broughton and Theo. Benfey. Broughton served as state association president in 1929 and went on to become Grand Exalted Ruler in 1946-1947. Benfey was secretary of the state association from 1920 until his death in 1935, the longest tenure served by any state officer.

First meetings of Sheboygan lodge were held in the Geele building. In 1896 the lodge moved to larger quarters in the Bank of Sheboygan building. The club moved to its present building at 632 Wisconsin Avenue in 1911 and purchased the building in 1926. Extensive remodeling through the years has resulted in the present fine home now enjoyed by the lodge.

A street fair and carnival on August 25-30, 1902 was an early highlight of lodge activities. Sheboygan has entertained the state convention three times - in 1912, 1931 and 1941.

## UPDATE, 9/1/2001:

Sheboygan has also moved to a newer facility. The lodge is very strong in its support of the Elks National Foundation, often achieving national ranking. It is also very active in its support for handicapped children in the local area.

---

## Appleton - 337

*Chartered July 7, 1897*



### CHARTER DATA:

Date of Dispensation - May 16, 1896

Date of Institution - May 16, 1896

Installing Officer - William De Steese

Sponsoring Lodge - Fond du Lac No. 57

### CHARTER MEMBERS:

Herman Erb, Jr.

C. H. Baake

J. A. Hawes

Peter R. Thom

R. M. Mitchell

C. H. Benton

M. K. Gochnauer

T. B. Reid

John Conway

Joseph Spitz

J. C. Kerwin

W. B. Murphy

### FIRST LODGE OFFICERS:

Exalted Ruler . . . . . J. A. Hawes

Esteemed Leading Knight . . . . . T. B. Reid

Esteemed Loyal Knight. . . . . M. K. Gochnauer

Esteemed Lecturing Knight. . . . . Peter R. Thom

---

Secretary . . . . . R. M Mitchell  
Treasurer . . . . . Herman Erb, Jr.  
Tiler . . . . . W. B. Murphy  
Trustees. . . . . John Conway - J. C. Kerwin - Joseph Spitz

The history of Appleton lodge consists not only of facts and figures but also in the inestimable value of the many benevolent and charitable projects sponsored by the lodge and in the important part the lodge has played towards the progressive growth of the community.

The first meetings were held in the Odd Fellows building. Shortly after, rooms were rented in the then D. W. Wharton building. In 1908, a Building Fund Committee began to function. Through sponsorship of minstrel show, a baseball team, dances, raffles and other events, the fund grew until the present site was purchased in 1911. The new Appleton Elks Club was opened and dedicated on January 15, 1913. The original mortgage was retired in 1920 and since then the club has been remodeled several times and an addition built. In addition to lounge, bar and lodge room facilities, the club boasts ten fine bowling alleys and has several times been host to the state Elks bowling tournament.

Appleton has had an outstanding record in ritualistic team competitions, representing the state of Wisconsin on four occasions at the Grand Lodge ritualistic contest.

There was fun too. The old-timers remember the initiations, lightly termed “informal”. The “ritual” called for initiates to plod around the room, carrying a pail of exploding firecrackers! And then they balanced precariously, tip-toeing about the lodge hall with full steins of beer balanced on their heads, beer slushing down in their eyes and dripping from their handlebar mustaches. And on and on goes the reminiscence when the old-timers get together.

## **UPDATE, 9/1/2001:**

Appleton lodge has moved twice since 1952. It should be noted that the Appleton Elks were successful in moving “Flag Day” from an Elks celebration to a community event. That city’s Flag Day event is the largest in the country.

---

## *Waukesha - 400*

*Chartered May 12, 1898*



### CHARTER DATA:

Date of Dispensation -

Date of Institution - December 8, 1897

Installing Officer - William De Steese

Sponsoring Lodge - Fond du Lac No. 57

### CHARTER MEMBERS:

A. F. Warden

E. Merton

G. L. Gove

D. L. Tullar

A. H. Youmans

Dr. J. P. Ward

Donald Ploss

Holmes Daubner

Orlow Daubner

Geo. L. Walker

Wm. A. Nickell

G. Harkness

W. H. Strachan

G. M. Gray

Jas. A. Ryan

D. K. Smith

A. W. Park

H. A. Tuller

R. J. Rogan

E. D. Walsh

H. T. Merriman

F. J. Clasen

G. E. Gerken

J. F. Tighe

M. J. McCoy

Wm. H. Nicholl

C. A. Bergeler

H. G. Morgan

C. W. Fraser

J. L. Williams

T. B. Quinn

J. J. Clark

T. E. Ryan



---

C. F. Merrill	John McKinley	J. L. McGowan
J. C. McCue	C. E. Armin	R. A. Hanke
C. E. Chilson	W. P. Dunlap	John Conner
L. F. Horn	E. S. Park	Fred D. Abell
	H. J. Mjelde	

### FIRST LODGE OFFICERS:

Exalted Ruler. . . . . A. F. Warden  
 Inner Guard. . . . . John Conner  
 Chaplain. . . . . Fred D. Abell  
 (No record of names of other officers)

The history of Waukesha lodge records that this lodge was perhaps more truly a “sister” of its sponsor than any other lodge in Elkdom. Many of the members of Fond du Lac’s sponsoring group were former Waukesha residents who had been transferred to Fond du Lac when the old Wisconsin Central Railroad moved its division offices from Waukesha to Fond du Lac. There they joined the Elks and immediately began to think of their old friends in Waukesha - without the benefits of Elkdom! This sad condition was remedied in 1898, when “400” was born - a number specially selected because it implied, in those days, the top aristocracy of any group!

The first lodge meetings were held in the Putney Block on Grand Avenue. There the lodge stayed until 1906, when new quarters were engaged in the Columbia Block at the corner of South and Clinton Streets. The present lodge home, a former residence, was purchased in December 1913. In 1924, the club built a substantial brick addition and has modernized the clubrooms frequently. A beautiful lodge room, comfortable lounges and bar and modern bowling alleys today provide the best of facilities for Waukesha Elks members.

### UPDATE, 9/1/2001:

Waukesha Lodge is the home of the most active “Past Exalted Rulers” group in the state. This group has financed and installed “History of the Flag” displays in schools serving over 60,000 students per day.



---

## *Eau Claire - 402*

*Chartered May 12, 1898*



### CHARTER DATA:

Date of Dispensation - December 28, 1897

Date of Institution - December 28, 1897

Installing Officer - William De Steese

Sponsoring Lodge - Fond du Lac No. 57

### CHARTER MEMBERS:

J. T. Joyce

Marshall Cousins

R. R. Chase

W. J. Rogers

F. A. Teall

P. C. Atkinson

Frank H. Bartlett

John W. Scott

DeAlton Thomas

W. H. Frawley

E. B. Putman

R. E. Parkinson

T. P. Cochrane

C. L. Smith

C. T. Bundy

W. M. Owens

J. F. Roberts

W. O. Forsyth

E. W. Heiss

Geo. H. Chapman

C. D. Moon

Chas. J. Kepler

A. E. Kepler

J. V. R. Lyman

J. E. Lang

---

## FIRST LODGE OFFICERS:

Exalted Ruler . . . . .	J. T. Joyce
Esteemed Leading Knight . . . . .	F. A. Teall
Esteemed Loyal Knight. . . . .	C. T. Bundy
Esteemed Lecturing Knight . . . . .	J. F. Roberts
Secretary . . . . .	J. W. Scott
Treasurer . . . . .	Marshall Cousins
Tiler . . . . .	G. H. Chapman
Inner Guard. . . . .	C. D. Moon
Chaplain. . . . .	D. S. Thomas
Esquire. . . . .	W. M. Owens
Trustees . . . . .	J. V. R. Lyman - Wm. H. Frawley - R. E. Parkinson

Eau Claire lodge began its life, as did so many other Wisconsin lodges, in the Pythian Hall at Eau Claire. For a time the lodge rented rooms in the Pythian Hall, at that time located in the Chippewa Valley Bank Building. In 1907, a move was made to the Eau Claire Club building which remained the lodge home for ten years. After a brief stay in the Culver-Culver Building (1917-1921), the Elks purchased the former Eau Claire Club Building and proceeded gradually to renovate and rebuild it into the commodious and comfortable home the club enjoys today.

In 1936, the lodge was host to the state association convention - an event that is still remembered as a highlight in lodge history.

---

## *Superior - 403*

*Chartered January 14, 1898*



### CHARTER DATA:

Date of Dispensation - January 14, 1898  
Date of Institution - January 14, 1898  
Installing Officer - William De Steese  
Sponsoring Lodge - Duluth No. 133

### CHARTER MEMBERS:

Frank M. Cole	K. W. McLaggan	D. E. Cole
Thomas B. Mills	D. D. Barber	A. M. Flagg
William A. McDonald	E. P. Mackey	Joseph Neil
Michael A. Lynch	Dr. J. A. Rene	Dr. H. J. Greenlaw
W. K. Applebough	A. W. Horton, Sr.	A. R. Mills
John E. Greeley	Solon L. Perrin	Edward Clark
Fred Koors	Heber McHugh	C. E. Roach
Dr. J. C. Adams	Harold Behrens	George L. Hicks
Charles W. Langebier	J. E. McGrath	G. L. Rier
J. D. Finn	F. A. Sandberg	D. E. Ford
J. J. Fisher	John A. Murphy	William Hiland

---

George W. Fanning  
John W. Hoehle  
John H. Harrison  
Dr. H. J. Connor

John T. Murphy  
E. C. Kennedy  
W. R. Manson  
S. E. Middleton

Robert E. Kelly, Sr.  
George E. Rolph  
H. E. Eldred

### FIRST LODGE OFFICERS:

Exalted Ruler . . . . . Frank M. Cole  
Esteemed Leading Knight . . . . . Thomas B. Mills  
Esteemed Loyal Knight . . . . . William A. McDonald  
Esteemed Lecturing Knight . . . . . Michael H. Lynch  
Secretary . . . . . W. K. Applebough  
Treasurer . . . . . John E. Greeley  
Tiler . . . . . Frederick E. Koors  
Trustees . . . . . Dr. J. C. Adams - W. C. Langebier - J. D. Finn

Superior is unique in that it is the only Wisconsin lodge, except pioneer Milwaukee, that was not sponsored by another Wisconsin lodge. Under the guidance of Duluth, Minnesota, Lodge No. 133. Superior held its first meeting in the Terminal Building at the corner of Winter Street and Ogden Avenue. The lodge also occupied club rooms, for brief periods, in Maryland Hall, at the corner of 13th and Tower, and the Hammond Block at the corner of Winter and Tower. In 1911, a building program was instituted with the laying of a cornerstone on September 20th. The new building was dedicated, with impressive ceremonies, on January 19, 1912.

A proud chapter in Superior's history was written in 1912 when Thomas B. Mills of Superior was elected Grand Exalted Ruler by the Portland, Oregon convention after an outstanding record as District Deputy.

### UPDATE, 9/1/2001:

Superior lodge moved to a former Masonic Temple when, in 1983, the building pictured here was destroyed by fire. By some miracle, some of its' significant historical artifacts survived and are on display at the lodge.

---

## *Madison - 410*

*Chartered May 12, 1898*



### CHARTER DATA:

Date of Dispensation - March 11, 1898

Date of Institution - March 11, 1898

Installing Officer - J. W. Watson

Sponsoring Lodge - Fond du Lac No. 57

### CHARTER MEMBERS:

Nels A. Ladd	M. Breckheimer	S. P. Rundell
G. W. Levis	H. C. Baker	J. W. Boehmer
R. L. Schmedeman	R. W. Hurd	G. E. Tripp
A. D. McConnell	M. L. Lyons	Wm. F. Siler
F. E. Parker	J. O. Sime	M. Kentzler
H. C. Geiger	N. P. Stenjem	P. H. Cass
Wm. Swenson	Chas. Sullivan	C. F. Klueter
Thomas Olson	M. M. Angwick	Tom Holley
E. A. Frederickson	P. Fauerbach	J. A. Simon
H. Schildhauer	M. Kaufman	J. W. Hudson
L. F. Collins	G. Burdick	A. C. Nielson

---

W. H. Huppler	M. Du Frenne	Clarke Gapen
M. S. Klauber	J. C. Harper	G. H. Joachim
M. J. Hoven	E. F. Ester	W. F. Boehme
F. P. Meehan	J. H. Smith	Will Gamm
W. J. Teckemeyer	J. Nevin	W. L. Beattie
P. Buntman	J. Gething	C. W. Anderson
F. W. Grove	G. V. Borchsenius	Wm. F. Hickley
H. F. Grove	H. S. Bird	D. B. Collins
A. J. Gatterdam	J. W. Groves	E. F. Burmeister
	S. L. Emery	

#### FIRST LODGE OFFICERS:

Exalted Ruler . . . . .	Nels A. Ladd
Esteemed Leading Knight . . . . .	George W. Levis
Esteemed Loyal Knight . . . . .	R. L. Schmedeman
Esteemed Lecturing Knight . . . . .	A. D. McConnell
Secretary . . . . .	F. E. Parker
Treasurer . . . . .	H. C. Geiger
Tiler . . . . .	Thomas Olson
Inner Guard . . . . .	N. P. Stenjem
Chaplain . . . . .	H. S. Bird
Esquire . . . . .	E. A. Frederickson
Trustees . . . . .	W. J. Teckemeyer - G. H. Joechim - M. R. Lyons

Madison lodge, backed by the pulling power of the state capitol and the University of Wisconsin, is perhaps the most “visited” club in the state and also one of the best hosts. First meetings were held in the Pythias Hall and after brief sojourns in various locations, the present clubhouse was built by the Elks Clubhouse Association in 1902. In 1926 the lodge purchased the building from the Association and, after burning the mortgage in 1939, has remodeled several times to bring the club to its present state of near perfection.

Madison lodge has always been a strong supporter of the Grand Lodge Foundation having bought and paid for Honorary Founders Certificate No. L-163 in 193 and Permanent Benefactors Certificate No. L-268 in 1950.

---

## *Stevens Point - 641*

*Chartered July 25, 1901*



### CHARTER DATA:

Date of Dispensation - December 15, 1900

Date of Institution - December 26, 1900

Installing Officer - Thomas B. Mills

Sponsoring Lodge - Wausau No. 248

### CHARTER MEMBERS:

O. F. Meyer

R. B. Finch

G. M. Houlehan

J. L. Barker

G. L. Park

J. W. Brown

J. H. Brennan

R. D. Rood

J. W. Clifford

J. N. Peickert

F. J. Carpenter

D. A. Taylor

W. W. Gregory

B. B. Park

C. H. Grant

F. T. Boston

W. A. Bugh

F. J. Blake

C. W. Karner

W. F. Collins

C. Teickert

F. H. Murray

M. G. Rood

E. D. Glennon

L. Brill

J. W. Dunegan

M. A. Hadcock

A. C. Krembs

C. B. Johnson

Neils Reton

A. M. Fox



---

## FIRST LODGE OFFICERS:

Exalted Ruler . . . . .	A. M. Fox
Esteemed Leading Knight . . . . .	M. A. Hadcock
Esteemed Loyal . . . . .	M. G. Rood
Esteemed Lecturing Knight . . . . .	G. L. Park
Secretary . . . . .	C. B. Johnson
Treasurer . . . . .	C. W. Karner
Tiler . . . . .	C. H. Grant
Trustees . . . . .	L. Brill - J. W. Clifford - F. T. Boston

The birth of Stevens Point lodge was typical of the 1900's. Minutes of the first lodge meeting disclose that the installation and initiatory ceremonies began at 3:00 p.m. and lasted until 10:30 p.m. This was followed by a banquet at the Jacobs House - at which time we trust the brothers were rewarded with suitable refreshments after their long ordeal!

The first lodge meetings were held in the Reton building on main street. Various halls were rented by the lodge until the new Elks building at 448 Clark Street was erected in 1941. It was dedicated on March 21, 1941 and has served well since then as a gathering place for Elks and as a community center for the city.

During the early years of the club's existence the entertainment committee engaged in the promotion of functions which entertained lodge members as well as townspeople and provided funds for the lodge treasury. Today, as well as in the past, members of the Elks Lodge and townspeople too regard the club as a community source of recreation and entertainment. The lodge is also looked upon as a leader in civic and community affairs lending its assistance both materially and financially.

A half century of growth and progress surely justifies the existence of any organization. The fact that Lodge No. 641 has had a 100% paid-up membership for the past three years indicates that the club is here to stay. Stevens Point Elks now enter the second half century with a firm determination to build a stronger fraternal, charitable, educational and civic spirit in the community, so that all may continue to benefit by the good accomplished through Elkdom.

---

## *Antigo - 662*

*Chartered July 25, 1901*



### CHARTER DATA:

Date of Dispensation - January 5, 1901

Date of Institution - February 21, 1901

Installing Officer - T. B. Mills

Sponsoring Lodge - Ashland No. 137

### CHARTER MEMBERS:

C. W. Deane	Max Steinhauer	O. P. Walch
W. H. Brown	C. F. Long	Jno. H. Mullan
L. D. Dana	Sam Ullman	I. E. Meagher
W. H. Dawley	A. Molle	R. Peterson
Wm. P. Fessenden	A. P. Church	M. J. Donohue
Thos. S. Miagher	Jas. F. Gould	J. A. Reuter
Max Hoffman	G. W. Latta	L. D. Hartford
W. G. Hackett	C. E. Henshaw	F. A. Millard
J. C. Dubois	F. V. Watson	I. D. Steffen
H. J. Hughitt	L. P. Kommers	C. O. Marsh
W. A. Stout	Wm. Frey	F. C. Kestly
M. C. Bruce	W. B. McArthur	Joseph E. Langlois
	F. C. Meyer	

---

## FIRST LODGE OFFICERS:

Exalted Ruler . . . . .	G. W. Latta
Esteemed Leading Knight . . . . .	C. E. Henshaw
Esteemed Loyal Knight . . . . .	C. O. Marsh
Esteemed Lecturing Knight . . . . .	Max Hoffman
Secretary . . . . .	O. P. Walch
Treasurer . . . . .	W. B. McArthur
Tiler . . . . .	W. G. Hackett
Inner Guard . . . . .	W. H. Dawley
Chaplain . . . . .	F. A. Millard
Esquire . . . . .	C. D. Fenn

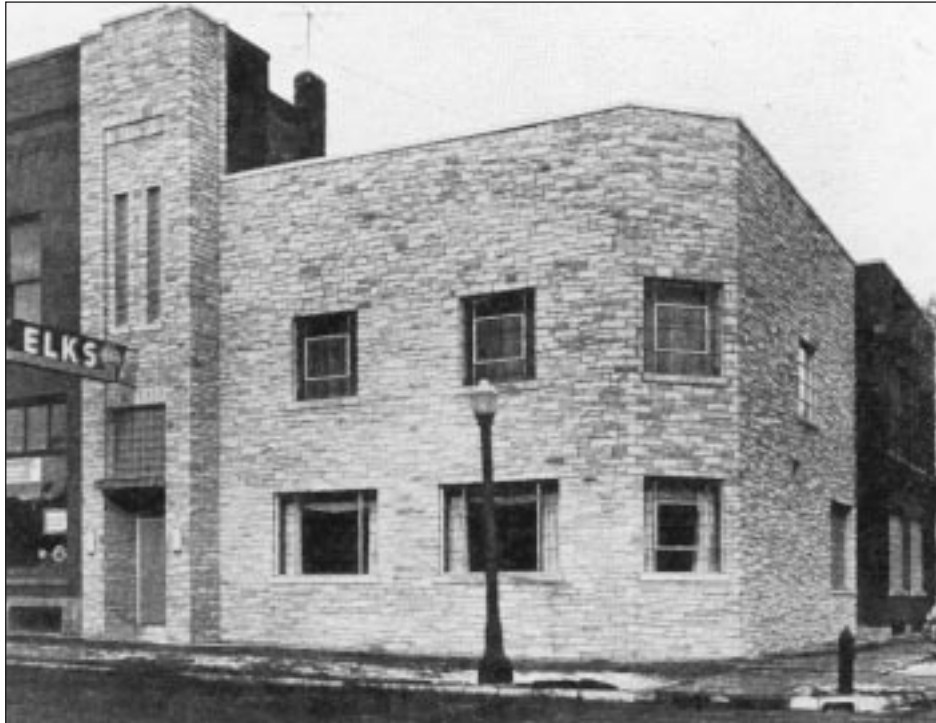
Antigo lodge was installed and held its first meetings in the Odd Fellows Hall. In 1906, the scene of activities shifted to the Masonic Temple and there they remained until 1931. In the meantime the lodge purchased the Deane property in 1917, which was used for clubrooms, though it was not large enough to hold lodge meetings. In 1931, the present clubhouse was opened and all activities have since then been under one roof.

Antigo's lodge records prior to 1919 were destroyed by fire. The opening of the new lodge home in 1931 was a gala event attended by Grand Exalted Ruler Lawrence Rupp and Grand Secretary J.E. Masters. The Antigo lodge was another proponent of annual Elks Minstrel show in the early days and up until 1925 all money needed for welfare and crippled children's work came from this event.

---

## *Marshfield - 665*

*Chartered July 25, 1901*



### CHARTER DATA:

Date of Dispensation - February 21, 1901  
Date of Institution - February 26, 1901  
Installing Officer - Thos. B. Mills  
Sponsoring Lodge - Stevens Point No. 641

### CHARTER MEMBERS:

H. A. Lathrope	L. Laemle	E. N. Dufour
John P Hume	Fred Vollmar	W. W. Giesse
I. P. Tiffault	John Anderson	Henry Horn
John F. Cole	E. E. Ames	R. L. Kraus
T. F. Lyons	E. S. Bailey	J. C. Marsh
E. L. Reese	H. A. Bly	A. Paulus
A. L. Bouldrie	Robert Connor	Leo Rose
W. H. Lind	W. P. Berdie	C. S. Sheerin

---

O. G. Lindemann	W. D. Connor	J. H. Rooney
E. Rosenbaum	A. M. Corbett	F. B. Warner
G. H. Grundy	K. W. Doege	Geo. W. Upham
T. A. Tack	Leo Froelich	E. C. Pors

#### FIRST LODGE OFFICERS:

Exalted Ruler . . . . .	H. A. Lathrope
Esteemed Leading Knight . . . . .	J. P. Hume
Esteemed Loyal Knight . . . . .	I. P. Tiffault
Esteemed Lecturing Knight . . . . .	J. F. Cole
Secretary . . . . .	T. F. Lyons
Treasurer . . . . .	E. L. Reese
Tiler . . . . .	A. L. Bouldrie
Inner Guard . . . . .	W. H. Lind
Chaplain . . . . .	O. G. Lindemann
Esquire . . . . .	E. E. Ames
Trustee . . . . .	L. Laemle

Marshfield lodge, located as it is near the center of the state, is a favorite stopping point for Wisconsin Elks as they criss-cross the state. The friendly atmosphere of its comfortable clubhouse is a byword in Wisconsin Elkdom and the lodge has contributed many active officers and workers to the state association.

First meetings were in the Knights of Pythias Hall. After organization, the lodge leased rooms over the Bodegain Blodgett Hotel. In 1917, it moved to the Guild Hall and in 1922 purchased the building which is still the Elks home in Marshfield, though constant modernization has changed both its external and internal appearance.

---

## *Watertown - 666*

*Chartered July 25, 1901*



### CHARTER DATA:

Date of Dispensation - March 22, 1901

Date of Institution - March 22, 1901

Installing Officer - Thomas B. Mills

Sponsoring Lodge - Madison No. 410

### CHARTER MEMBERS:

George Stanchfield

Jesse Stone

C. A. Skinner

Herman Wertheimer

O. C. Wertheimer

Wm. D. Sproesser

A. J. Hilgendorf

Wm. F. Brandt

Albert Solliday

J. W. Wiggenghorn

M. H. Gaebler

D. H. Beurhaus

E. W. Schultz

F. C. Werner

J. W. Schempf

Gust. Bucheit

Charles Mulberger

A. F. Solliday

Robert Dent

A. R. Vaughn

H. A. Beurhaus

Carl Manz

C. H. Jacobi

Eugene Meyer

J. H. Smith

W. E. Brandt

A. Holmes

H. C. Block

H. A. Long

A. G. Knaak

---

Geo. G. Chapman	L. H. Cordes	Daniel Kusel
W. H. Woodard	E. L. Schempf	F. G. Kecke
Wm. Sproesser	C. J. Habegger	Geo. W. Webb
W. C. Stone	Max G. Kusel	Oscar Weber
George G. Nichols	H. L. Schultz	

## FIRST LODGE OFFICERS:

Exalted Ruler . . . . .	Jesse Stone
Esteemed Leading Knight . . . . .	G. H. Stanchfield
Esteemed Loyal Knight . . . . .	John Chapman
Esteemed Lecturing Knight . . . . .	Chas. Mulberger
Secretary . . . . .	C. A. Skinner
Treasurer . . . . .	Carl Manz
Tiler . . . . .	F. G. Kecke
Inner Guard . . . . .	Eugene Meyer
Chaplain . . . . .	Robert Dent
Esquire . . . . .	Herman Wertheimer
Trustees . . . . .	W. H. Woodard - C. H. Jacobi - A. F. Solliday

The first meetings of the lodge were held in the Knights of Pythias Hall. In 1902, quarters were established in the Daub Building and in 1907 the lodge moved to the third floor of the new Masonic Temple, where it remained until 1916, when the building was gutted by fire and all lodge records were destroyed. In the meantime, the lodge had purchased the old Concordia Opera House and following the fire immediate plans were made to remodel it for use. On December 31, 1916 the Elks Home was formally open for use, completely remodeled and furnished. It has been renovated and remodeled several times since then.

Watertown lodge has taken an active part in all Grand lodge and association activities and has been a leader in community affairs. It has long been the policy of the lodge to offer the facilities of the Home for worthwhile undertakings and every civic and patriotic program in Watertown has been organized there. During World War II the second floor of the Home was turned over to the local chapter of the Red Cross and they carried on an active work program there for three years.



---

## *Portage - 675*

*Chartered July 25, 1901*



### CHARTER DATA:

Date of Dispensation - March 14, 1901

Date of Institution - March 26, 1901

Installing Officer - Thomas B. Mills

Sponsoring Lodge - Watertown No. 666, Milwaukee No. 46,  
Waukesha No. 400, Madison No. 410

### CHARTER MEMBERS:

J. H. Wells	E. P. Ashley	C. P. Jaeger
R. E. York	W. H. Little	Wallace Murison
J. E. Jones	J. C. Leisch	Chas. Altenberg
H. E. Bellinghausen	F. J. Bolting	A. W. Hosig
E. H. Burlingame	R. D. Horton	F. P. Drinker
J. C. McKenzie	W. S. Stroud	W. A. Nelson
C. G. Jaeger	R. C. Curtis	H. J. Puffer
J. C. Britt	W. C. Gault, Jr.	Maurice Goodman
A. C. Taylor	W. O. Kelm	H. S. Rockwood
David Buglass	C. W. Latimer	Geo. W. Dusenberry

---

## FIRST LODGE OFFICERS:

Exalted Ruler . . . . .	J. H. Wells
Esteemed Leading Knight . . . . .	J. E. Jones
Esteemed Loyal Knight . . . . .	H. L. Bellinghausen
Esteemed Lecturing Knight . . . . .	E. H. Burlingame
Secretary . . . . .	C. G. Jaeger
Treasurer . . . . .	F. P. Drinker
Tiler . . . . .	D. Buglass
Inner Guard. . . . .	E. P. Ashley
Chaplain . . . . .	C. P. Jaeger
Esquire . . . . .	J. C. Britt
Trustees . . . . .	A. C. Taylor - H. J. Puffer - J. C. McKenzie

Portage lodge is unique in that apparently there were four sponsoring lodges - Watertown, Milwaukee, Waukesha and Madison. Records do not indicate which lodge was the “official” sponsor. First meetings were held in Hellman Hall and, while no data is available on other locations, it is probable that various quarters were occupied until 1922, when the present home was purchased. It was enlarged in 1930 by the building of an addition and has recently undergone further modernization.

Portage was host to the state convention in 1909 and has several times entertained the spring or fall conferences. Many of its members have served as state officers and committeemen.

## UPDATE, 9/1/2001:

Portage lodge, its Elks and their families have an envious record of service to the community...especially the needy and the youth.

---

## Neenah-Menasha - 676

*Chartered July 25, 1901*



### CHARTER DATA:

Date of Dispensation - March 12, 1901

Date of Institution - March 20, 1901

Installing Officer - Thomas B. Mills

Sponsoring Lodge - Appleton No. 337

### CHARTER MEMBERS:

E. V. Tieleven

F. J. Oberweiser

Fred Huband

A. E. Jackson

Jos. Paul

A. N. Strange

V. M. Landgraf

F. S. Burroughs

M. M. Schoetz

Wm. M. Schubert

E. A. Oberweiser

Geo. P. Pierce

R. N. Hine

O. J. Welsch

J. E. Foxgrover

W. W. Reed

Wallace Pierce

F. A. Wilde, Jr.

J. L. Youmans

E. J. Smith

C. O. Hanson

Chas. H. Kraemer

Chas. Schultz

S. G. Thompson

Chas. Draheim

Chas. Schumann

Wm. Arnemann

Cliff E. Pierce

C. S. Kimball

Albert Riesenweber

---

## FIRST LODGE OFFICERS:

Exalted Ruler . . . . .	Geo. A. Loescher
Esteemed Leading Knight . . . . .	Chris Walter
Esteemed Loyal Knight . . . . .	Fred Huband
Esteemed Lecturing Knight . . . . .	J. L. Youmans
Secretary . . . . .	E. A. Oberweiser
Treasurer . . . . .	Wm. Arnemann
Tiler . . . . .	O. J. Welsch
Inner Guard . . . . .	R. W. Schlegel
Chaplain. . . . .	James Thom
Esquire. . . . .	Gregor Lenz
Trustees. . . . .	F. S. Burroughs - Fred Loescher - James Thom

Neenah-Menasha lodge has had the longest tenure, in one location, of any lodge in the state. The lodge moved to its present location one year after its organization and, though the quarters have been expanded and modernized, the address remains the same - 198 Main Street. For many years, known as Menasha lodge, its jurisdiction covers the cities of Neenah and Menasha and in 1950, by vote of the membership and with the approval of the Grand lodge, the name was officially changed to "Neenah-Menasha B.P.O.E. No. 676".

The history of the lodge has been distinguished by its active support of the many charitable and patriotic activities which are initiated by the Elks both nationally and at the local level. The lodge participated in the organization of the state association in 1902 and since then many members have served on various state committees and as officers of the association.

## UPDATE, 9/1/2001:

Neenah-Menasha 676 later moved to more-modern facilities on Mill Street in Menasha.

---

## *Manitowoc - 687*

*Chartered July 25, 1901*



### CHARTER DATA:

Date of Dispensation - April 19, 1901

Date of Institution - April 19, 1901

Installing Officer - Thomas B. Mills

Sponsoring Lodge - Sheboygan No. 299

### CHARTER MEMBERS:

E. W. Wagner

F. T. Zentner

W. F. Pflueger

N. E. Stephenson

Samuel Hall, Jr.

Julius Linstedt

J. A. Rummele

J. H. Keith

M. H. Dempsey

Charles E. Spindler

C. A. Huchthausen

J. S. Egan

W. F. Brandt

M. H. Murphy

J. E. Dempsey

H. C. Hanford

C. B. Johnson

Emil Teitgen

W. W. Nelson

W. G. Kemper

Dr. F. S. Luhman

Maximilian Rahr

Jay Hall

C. H. Bauer

C. F. Fechter

I. Craite

Emil C. Sixta

C. J. Bouril

G. A. Nyhagen

---

## FIRST LODGE OFFICERS:

Exalted Ruler. . . . .	E. Wagner
Esteemed Leading Knight . . . . .	F. T. Zentner
Esteemed Loyal Knight. . . . .	N. E. Stephenson
Esteemed Lecturing Knight . . . . .	Wm. F. Pflueger
Secretary. . . . .	Wm. F. Brandt
Treasurer. . . . .	M. H. Dempsey
Tiler . . . . .	Samuel Hall, Jr.
Trustees . . . . .	E. Sixta - J. H. Keith - C. A. Huchthausen

The Manitowoc Opera House was the scene of the institution of Manitowoc lodge but the first quarters were in rented rooms in the Dempsey Building at the corner of 8th and Commercial Streets. In 1911, the lodge moved to 8th and Quay Streets and in 1918, purchased the present home at 809 South 8th Street.

The lodge has twice been host to the state convention - in 1919 and again in 1933. Though there is probably no significance, lodge oldsters point out that the dates coincide with the beginning and end of the era, known as the “Noble Experiment”, when a fourteen-year drought plagued this land of ours!

For more than the fifty years of Manitowoc’s lodge existence there were only seven Secretaries. The longest to serve is the present Secretary, William C. Herrmann, who was elected April 1, 1929, and still holds the position.

During the same span, thirty-two Exalted Rulers were elected, seventeen of whom are dead, and the remaining fifteen are still members and very active in the “Past Exalted Rulers” Club.

## UPDATE, 9/1/2001:

Manitowoc lodge surrendered its “downtown” building and, with the proceeds, acquired a golf course and clubhouse on the Lake Michigan shoreline. This might be the most beautiful site for an Elks Lodge in all of Wisconsin.

---

## *Baraboo - 688*

*Chartered April 17, 1901*



### CHARTER DATA:

Date of Dispensation - April 17, 1901

Date of Institution - April 17, 1901

Installing Officer - Thos. B. Mills

Sponsoring Lodge - Madison No. 410

### CHARTER MEMBERS:

C. H. Evenson

E. G. Marriott

T. W. English

A. Reinking

Evan A. Evans

Jas. L. Bonham

Phil D. Cramer

Bert Cramer

H. H. Potter

J. G. Seaman

H. A. Whipple

H. L. Halsted

H. M. Acott

M. H. Mould

M. A. Warren

E. S. Eiswell

G. L. G. Cramer

L. E. Hoyt

Hans C. O'Kern

W. J. Power

Wm. A. Warren

J. Van Orden

C. P. Riley

H. G. Merritt

W. M. Langdon

W. M. Allen

H. W. Abbot

F. E. Morey

E. P. McFetridge

C. A. Ballard



---

F. C. Gollmar	Geo. B. Dash	E. Sherman
C. M. St. Clair	W. S. Gollmar	John McGann
W. H. McFetridge	A. G. Buckley	Jas. H. Pierce
C. A. Gollmar	A. F. Fisher	B. F. Gollmar
	H. H. Thomas	

#### FIRST LODGE OFFICERS:

Exalted Ruler . . . . .	M. H. Mould
Esteemed Leading Knight . . . . .	H. L. Halsted
Esteemed Loyal Knight . . . . .	W. J. Powers
Esteemed Lecturing Knight . . . . .	T. W. English
Secretary . . . . .	H. M. Acott
Treasurer . . . . .	H. G. Merritt
Tiler . . . . .	P. D. Cramer
Inner Guard . . . . .	Wm. M. Allen
Chaplain . . . . .	J. L. Bohnam
Esquire . . . . .	E. L. Ross
Trustees . . . . .	E. G. Marriot - Chas. Ruhland - E. P. McFetridge

First meetings of the Baraboo lodge were held in the Knights of Pythias Hall. From there the lodge moved to rooms over a store at 110 Fourth Avenue in the fall of 1912. In 1921, another move provided larger quarters over the Woolworth Store on Fourth Street. In the spring of 1939 Baraboo purchased the former Al Ringling home (of circus fame) and has converted the historic mansion into a comfortable clubhouse with an addition which houses bowling alleys and a large lodge room.

#### UPDATE, 9/1/2001:

Local citizens expect the Baraboo Elks to maintain this mansion as a historical site. The local community does not, of course, provide any assistance in that effort.

---

# *Wisconsin Rapids - 693*

*Chartered July 25, 1901*



## CHARTER DATA:

Date of Dispensation - April 12, 1901

Date of Institution - April 12, 1901

Installing Officer - Thomas B. Mills

Sponsoring Lodge - Stevens Point No. 641

## CHARTER MEMBERS:

W. J. Conway	Wm. Scott	Otto R. Roenius
Chas. G. Pomianville	M. Bogoger	F. J. Wood
E. J. Whitney	A. C. Otto	Sam Church
Guy Nash	W. G. Scott	Ernest Oberbeck
A. L. Ridgman	W. H. Reeves	W. E. Wheelan
John Coniff	A. G. Miller	D. D. Conway
Charles A. Dixon	O. T. Hougen	C. F. Kruger
B. R. Goggins	Isaac P. Witter	H. A. Love
H. M. Sanderson	W. A. Drumb	T. A. Taylor
R. W. Morse	A. B. Sutor	Chas. F. Kellogg

---

F. L. Steib  
W. H. Barnes  
A. Muir

L. M. Schlatterer  
M. J. Slattery  
A. E. Lichty  
G. T. Dutcher

F. L. Rourke  
J. A. Jaeger  
Wm. F. Kellogg

## FIRST LODGE OFFICERS:

Exalted Ruler . . . . . W. J. Conway  
Esteemed Leading Knight. . . . . A. G. Miller  
Esteemed Loyal Knight. . . . . Otto R. Roenius  
Esteemed Lecturing Knight. . . . . John C. Coniff  
Secretary . . . . . J. A. Jaeger  
Treasurer . . . . . Isaac P. Witter  
Tiler . . . . . Sam Church  
Inner Guard . . . . . W. G. Scott  
Chaplain . . . . . L. M. Schlatterer  
Esquire . . . . . A. L. Ridgman  
Trustees. . . . . Ernest Oberbeck - O. T. Hougen - W. H. Carey

Organized as Grand Rapids lodge in 1902, the name was officially changed to Wisconsin Rapids in 1920, when the city changed its name. The first hall was in the Wood Block and the years from 1901 to 1915 passed in several rented quarters. The present clubhouse was dedicated on April 17, 1915.

Some historical highlights: 1919 - A monthly publication, mailed to members, was started; 1926 - Big 25th anniversary celebration; 1929 - Host to Elks state bowling tournament; 1934 - Grand Exalted Ruler Walter Meier visited lodge; 1938 - Ritualistic team won state championship; 1941 - Lodge home free of debt; 1944 - Won state bowling championship; 1949 - Elks bowling league formed; 1951 - Golden anniversary celebration.

## UPDATE, 9/1/2001:

This lodge is the “home base” for the E.N.F. Bike -Ride. The Bikers have raised over \$80,000 to-date. Visiting “693” in the Spring is a fantastic experience; you can be UNDERNEATH a waterfall while inside their Lodge.

---

## *Beloit - 864*

*Chartered June 16, 1903*



### CHARTER DATA:

Date of Dispensation -  
Date of Institution - June 16, 1903  
Installing Officer - Henry C. Baker  
Sponsoring Lodge - Janesville No. 254

### CHARTER MEMBERS:

Total of 51 (No record of names)

### FIRST LODGE OFFICERS:

Exalted Ruler. . . . .	J. S. Allen
Esteemed Leading Knight . . . . .	N. D. Cook
Esteemed Loyal Knight. . . . .	O. B. Osborn
Esteemed Lecturing Knight. . . . .	I. W. Thompson
Secretary. . . . .	C. E. Inman

---

Treasurer . . . . .	B. P. Eldred
Tiler . . . . .	F. E. Gardner
Trustees . . . . .	C. E. Conklin - A. L. Dearhammer - A. S. Smiley
Esquire . . . . .	A. R. Wellington
Inner Guard . . . . .	G. E. Hart
Chaplain . . . . .	D. H. Pollock

While many of the early records of Beloit lodge were lost during a period in the early thirties when the lodge was without clubrooms, it appears that clubrooms were rented for a period and that the lodge then purchased a building. When this building was outgrown, it was sold and more commodious quarters were purchased in 1923. There followed several years of problems, due to the local and national economic situation, during which the lodge gave up its building and many members became inactive.

In 1936, the 17 remaining members decided to revive interest in the lodge and in May of that year 54 new members were initiated. The lodge took up rented quarters and an expansion program along conservative lines was inaugurated. In January, 1946 the lodge was able to move into its own new and attractive quarters at 416 College Avenue.

Since 1936 the lodge has maintained a steady growth and activity record and today is looking forward to its own fiftieth anniversary with well over five hundred members on the lodge roster.

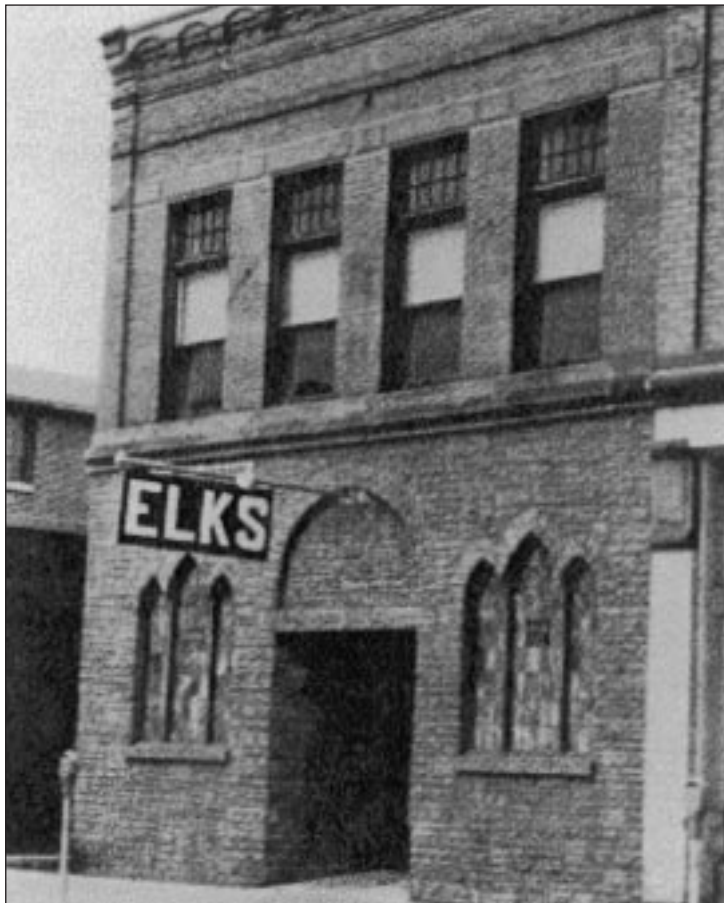
The Elks lodge in Beloit is a splendid example of what can be accomplished by a small group who face unusually severe problems and work out a solution along conservative and constructive lines.

## **UPDATE, 9/1/2001:**

Beloit Lodge now has 83 members and has used a variety of locations over the past 6-10 years.

---

*Oconto - 887*  
*Chartered July 21, 1904*



**CHARTER DATA:**

Date of Dispensation - April 12, 1903  
Date of Institution - December 17, 1903  
Installing Officer - John Kehlor  
Sponsoring Lodge - Green Bay No. 259

---

## CHARTER MEMBERS:

Jas Coleman	D. G. Classon	C. A. Best
D. H. Mooney	E. H. Gilkey	W. P. Cook
A. V. Classon	A. M. Martineau	A. Piene
Guy Martineau	Geo. Beyer	T. A. Pamperin
C. A. H. Fortier	C. D. Post	H. F. Jones
	V. J. Okehlher	

## FIRST LODGE OFFICERS:

Exalted Ruler . . . . .	D. G. Classon
Esteemed Leading Knight . . . . .	D. E. Wilcox
Esteemed Loyal Knight . . . . .	V. J. Okehlher
Esteemed Lecturing Knight . . . . .	Geo. Beyer
Secretary . . . . .	C. A. H. Fortier
Treasurer . . . . .	C. A. Best
Tiler . . . . .	Guy Martineau
Inner Guard . . . . .	A. V. Classon
Chaplain . . . . .	Jas. Coleman
Esquire . . . . .	D. H. Mooney
Trustees . . . . .	Geo. Beyer - E. H. Gilkey - A. Piene

As did may other Wisconsin lodges, Oconto held its first meetings in the Knights of Pythias Hall. After occupying various rented quarters for a number of years, the lodge purchased quarters in 1938, and their present quarters in 1951.

## UPDATE, 9/1/2001:

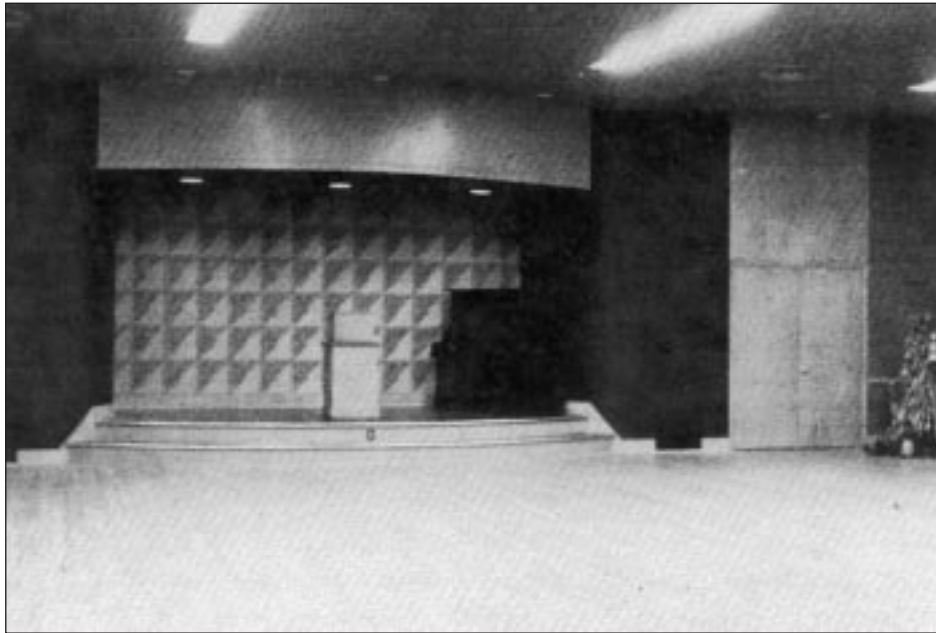
Oconto's building was destroyed by fire. Their Elks are now in a modern new facility. "887" is known throughout Wisconsin for the intensity with which its pursues community needs. Late in the 1990s, Oconto lodge was first in the nation in New Pledge Points for the National Foundation.



---

## *Kaukauna - 962*

*Chartered July 20, 1906*



### CHARTER DATA:

Date of Dispensation - March 30, 1905

Date of Institution - May 6, 1905

Installing Officer - R. S. Witte

Sponsoring Lodge - Menasha No. 676

### CHARTER MEMBERS:

E. H. Whittier

H. B. Tanner

L. Kittell

Felix Warshasky

Otto A. Look

E. H. Kloehn

Wm. M. Hoyt

Oscar Olson

A. M. Foster

Harry Langlois

E. D. Hallock

Clyde Thompson

Daniel Powers

Geo. Elworthy

C. E. Raught

W. L. Moran

D. W. Roderick

C. H. Wagner

A. R. Coates

O. J. Peterson

W. C. Wendt

R. A. Morris

C. H. Hartley

S. D. Cohen

---

## FIRST LODGE OFFICERS:

Exalted Ruler . . . . .	A. R. Coates
Esteemed Leading Knight . . . . .	Otto A. Look
Esteemed Loyal Knight . . . . .	A. M. Foster
Esteemed Lecturing Knight. . . . .	E. C. Hallock
Secretary . . . . .	W. M. Hoyt
Treasurer. . . . .	C. H. Hartley
Tiler . . . . .	D. E. Powers
Inner Guard. . . . .	Geo. P. Elworthy
Chaplain. . . . .	C. B. Thompson
Esquire . . . . .	E. H. Whittier
Trustees. . . . .	L. Kittell - H. B. Tanner - W. C. Wendt

Kaukauna was the last of the “early 1900s” group of Wisconsin lodges. Meeting first in the Sprangers Building, the lodge leased quarters in their present location in 1911. In November of 1911, the lodge entered into a five year lease with Luther Lindaaur for the use of our present quarters. In June of 1917 the lodge authorized the purchase of the Lindaaur Block for a sum not to exceed \$9,500.00. On December 13, 1917, the lodge purchased the building “for \$9,500.00 with \$500 down and a lot of guts”, as their historian notes. The lodge rooms and lodge hall have recently been remodeled and now provide a comfortable gathering place for Kaukauna Elks.

In 1917, after the American entry into the war, the lodge busied itself with doing its part in food conservation and the numerous other patriotic duties the Elks always assumed. The lodge was open to all soldiers, both Elks and non-Elks; paid up membership cards were sent to Elks in service; etc.

The lodge was always active; the glittering annual ball; bachelor girls parties; minstrel shows such as the “White Elephants”, “Let’s Go Peggy” and others.

Kaukauna points with pride to its record in 1941 when the lodge received a plaque from the Grand Lodge for being one of four lodges in the United States to have a 100% paid up membership.

## UPDATE, 9/1/2001:

Kaukauna lodge sold this building. Deciding to concentrate on “lodge” rather than “club” activities, “962” now holds its meetings in local restaurants while aggressively dealing with local needs.

---

## *Marinette - 1313*

*Chartered July 16, 1914*



### CHARTER DATA:

Date of Dispensation -

Date of Institution - May 15, 1914

Installing Officer - Charles Oellerich

Sponsoring Lodge - Green Bay No. 259

### CHARTER MEMBERS:

J. R. McLain	H. R. Goldman	Loren Robeck
William C. Campbell	L. E. Joyce	Maurice Bird
Frank J. Lauerman	L. G. Goerling	Joseph Gosling
Charles J. Lauerman	Edson J. Phillips	Frank C. Buth
J. A. J. Lauerman	G. E. Stephenson	G. Frederick Colter
Francis A. Brown	Russel R. Heim	Geo. W. Graves
Louis A. McAllipine	Jas. A. Hamilton	E. C. Eastman
Jos. Maurer	Joseph Fisher	Chris J. Scheldt
J. E. Utke	R. A. McDonald	Emanuel M. Mendelson
Geo. A. Mitcheson	Edward W. Miller	Eugene A. Mendelson
Frank Erdlitz	Ralph Skidmore	John R. Hubley
Dan J. Madigan	Allen W. John	E. C. Samuelson

---

Fred Carney, Jr.	A. T. Fairchild	E. H. Schwartz
H. J. Brown	F. R. Solmes	L. D. Martin
Wm. A. Holquist	Leonard P. Clapp	Julius Solomon
Chas. W. Teichert	Maurice E. Brown	C. E. Peterson
Jacob Stern	Ralph A. Cook	Lawrence Barrett
S. R. Brough	Charles J. Lynes	G. J. Reinke
Jos. L. Hershey	Fred E. Raiche	

## FIRST LODGE OFFICERS:

Exalted Ruler . . . . .	Jerome R. McLain
Esteemed Leading Knight . . . . .	Edward W. Mille
Esteemed Loyal Knight . . . . .	Charles J. Lynes
Esteemed Lecturing Knight . . . . .	Evert C. Eastman
Secretary . . . . .	Frank C. Buth
Treasurer . . . . .	Harry J. Brown
Tiler . . . . .	John R. Hubley
Trustees . . . . .	Juilus E. Utke - Wm. A. Holquist - J. A. J. Lauerman

Many of the charter members of Marinette lodge, the first to be added to the Wisconsin roll after a lapse of nearly ten years, had been members of neighboring Oconto lodge. These members had decided that Marinette should have a lodge of its own and in 1914 the first meetings were held at 1601 1/2 Main Street. The lodge occupies the same quarters today, although considerably expanded and modernized.

Marinette was host to the 1929 state association convention and entertained the state bowling tournament in 1945.

Until recent years, Marinette embraced many members from its sister city, Menominee, Michigan. This city now has its own lodge which belongs to the Michigan association.

## UPDATE, 9/1/2001:

Marinette lodge moved to Bridge Street and continues to provide strong support for veterans facilities in the Michigan Upper Peninsula. It was "1313" that caused the Grand Lodge to conclude that Elks work across State lines is valid for Grand Lodge recognition.

---

## *Chippewa Falls - 1326*

*Chartered July 12, 1916*



### CHARTER DATA:

Date of Dispensation -

Date of Institution - October 20, 1915

Installing Officer - W. J. Conway

Sponsoring Lodge - Eau Claire No. 402

### CHARTER MEMBERS:

H. J. Brynelson

Henry Flug

Frank McCarthy

William Hebert, Sr.

Frank Hanzlik

Dr. McHugh

Geo. Blum

Frank Ihle

Frank Hughes

Louis Altman

William Dreher

Fred Bigler

Orrin Larrabee

(The above is a partial list of charter members - no record of others due to fire destroying records)

---

## FIRST LODGE OFFICERS:

Exalted Ruler . . . . . Thomas J. Connor  
Esteemed Leading Knight. . . . . Dayton E. Cook  
Esteemed Loyal Knight. . . . . C.L. Muggah  
Esteemed Lecturing Knight . . . . . W. W. O'Malley  
Secretary . . . . . A.L. Beier  
Treasurer . . . . . Fred Pitsch  
Tiler . . . . . Carl Cunningham  
Trustees . . . . . John Piotrowski - F. W. Anderson - John Pannier

There remains little record of the early history of Chippewa Falls lodge since all minute books and other papers of the lodge prior to 1925, were destroyed by fire.

From the date of their institution until October 12, 1920, the Elks were quartered in rooms over the Loop Theater on Bridge Street. When the new Hotel Northern was built, the Elks took over the fifth floor of that building and have been in residence here since that time. The Elks lodge was primarily responsible for the building of the hotel, which filled a community need.

## UPDATE, 9/1/2001:

This lodge moved to a golf course and created what is now known as the "Wissota Golf Club"...which it leases to a private concern. Students from this lodge always score extremely well in E.N.F. scholarship competitions.

---

## *Two Rivers - 1380*

*Chartered July 8, 1920*



### CHARTER DATA:

Date of Dispensation - November 24, 1919

Date of Institution - January 10, 1920

Installing Officer - L. J. Fellenz

Sponsoring Lodge - Manitowoc No. 687

### CHARTER MEMBERS:

Guido Berger

Edward White

Oscar Anderberg

J. W. Levanetz

John Smith

Robert Dreger

Frank Kaufman

Oscar Alberts

J. Hamacheck, Sr.

E. A. Grover

R. S. Suettinger

Jos. Eggers

George Wehausen

Joe Gloe

E. A. Meckelberg

Otto Simonis

Frank Liebich

Harry Hurst

Sam Schwartz

Gust Kirst

Fred Tegge

Frank Kracha

Lute Fowler

J. Gesell

Conrad Baetz

J. H. Schultz

Frank Reiley

Archie Last

George Bacon

Reuben Hrudtke

Chas. Mueller

F. W. Kern

E. P. Hamilton

E. R. Mueller

Otto Kahlenberg

John Kahlenberg

F. W. Dicke

George Hamilton

G. A. Magee



---

Frank Becker	Monroe Schultz	T. W. Suddard
Ray Schneider	Ed. Goetz	Simon Schwartz
W. Hamacheck	John Reiss	John Braun
F. A. Johnson	Andrew Smith	A. J. Eisenbeiss
D. F. Hamacheck	Ed. Gloe	A. C. Kummerow
Jule Hamacheck	H. Neinstedt	Chas. Krause
Chas. Kirst	A. V. Delmore	Noel Nash
J. K. Stephany	Ben Zucker	E. J. Soik
Peter Bartelme	Oscar Stockmeyer	O. A. Voshardt

### FIRST LODGE OFFICERS:

Exalted Ruler . . . . .	Geo. J. Anderes
Esteemed Leading Knight . . . . .	Bert Larkin
Esteemed Loyal Knight . . . . .	Neuman Nash
Esteemed Lecturing Knight. . . . .	J. H. Weilep
Secretary . . . . .	Geo. J. Eisenbeiss
Treasurer. . . . .	Ralph Scheure
Tiler . . . . .	F. Laubenstein
Inner Gaurd . . . . .	August Gloe
Chaplain. . . . .	Chas Jansky
Esquire. . . . .	A. H. Lohman
Trustees. . . . .	H. C. Cowran - Wm. Kahlenberg - J. F. Magee

The marine Exchange Building was the first “home” of Two Rivers lodge, where the clubrooms remained until 1926 when the present clubhouse was built and occupied in late November.

From 1927 to 1932 the annual Elks Carnivals were the biggest events of the local social season. Other highlights in lodge activities occurred in 1938, when the state bowling tournament came to Two Rivers, and in 1945 when the Silver Anniversary Jubilee drew Elks from all over the state.

Although one of the smallest lodges in the state, Two Rivers lodge has been well represented in state association and grand lodge activities. Brothers Myron Schwartz and Dr. A.V. Delmore have served as Presidents of the State Association, and Dr. Delmore recently completed his term as Grand Inner Guard.

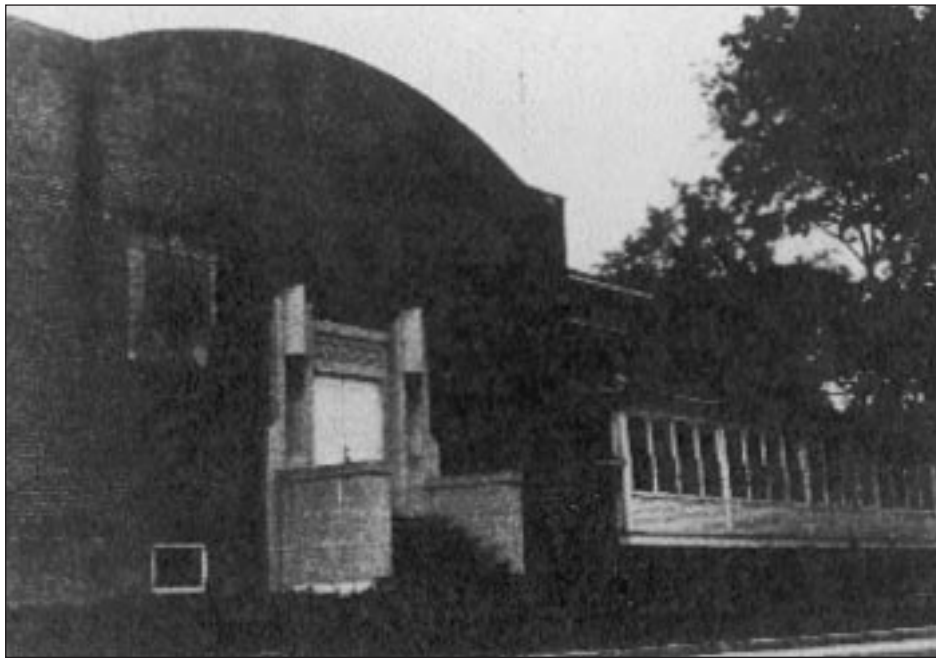
### UPDATE, 9/1/2001:

In 1997-1998 Two Rivers provided another State President to Wisconsin and in 2001 installed the first lady E.R. in the state. “1380” probably has the highest percentage of lady members in Wisconsin and is one of the few lodges continually expanding its membership rolls.

---

## *Rice Lake - 1441*

*Chartered July 13, 1922*



### CHARTER DATA:

Date of Dispensation -

Date of Institution - April 12, 1922

Installing Officer - H. A. Kiefer

Sponsoring Lodge - Chippewa Falls No. 1326

### CHARTER MEMBERS:

B. I. Bliss

D. W. Nelson

Louis Cohen

Fred A. Tate

R. L. Lyon

Martom Bretl

Herb Achtenberg

G. O. Stark

W. J. Ackerman

E. E. Larson

T. H. Field

O. G. Jensen

A. M. Chrislaw

J. H. Wilz

A. B. Crisler

O. C. Schenke

W. A. Demers

J.E. Horseman

Griffin Nelson

R. C. Chandler

John McCullum

T. W. Quinn

J. S. Truex

Frank E. Arden

J. C. Bergeron

J. W. Webster

E. G. Shervey

J. J. Jacobson

Carl Jacobson

R. A. Ross

---

Joe Abramson	Geo. Saile	Truman Bjoin
Wm. Stein	Wm. Overby	T. W. Hoff
E. E. Quinn	C. E. Overby	R. V. Hoff
J. H. Wallis	A. C. Robarge	R. V. Branham
A. W. Webster	W. H. Dalton	G. K. Mills
Wm. Stone	S. S. Brodt	H. M. Whitney
J. T. Cornwall	E. O. Snyder	Hans Jacobson
J. B. Carter	N. W. Heints	R. L. Schick
J. P. Qualy	C. F. Harback	Carl G. Hagen
	F. B. Tompkins	

#### FIRST LODGE OFFICERS:

Exalted Ruler . . . . .	R. C. Chandler
Esteemed Leading Knight . . . . .	J. H. Wallis
Esteemed Loyal Knight. . . . .	J. S. Truex
Esteemed Lecturing Knight. . . . .	J. J. Jacobson
Secretary . . . . .	Carl G. Hagen
Treasurer . . . . .	E. G. Shervey
Tiler . . . . .	A. W. Webster
Trustees. . . . .	W. A. Demers - J. E. Horseman - R. A. Ross

Rice Lake is another “big little lodge” in Wisconsin. Its activities are a dominant factor in the comparatively small community of Rice Lake. After seeing the light of day in the I.O.O.F. Hall the lodge occupied rented rooms until 1933, when a handsome residence property was purchased on the lake shore. Many improvements have been made until today the quarters are more than adequate for all lodge activities and serve as a center for many other community gatherings.

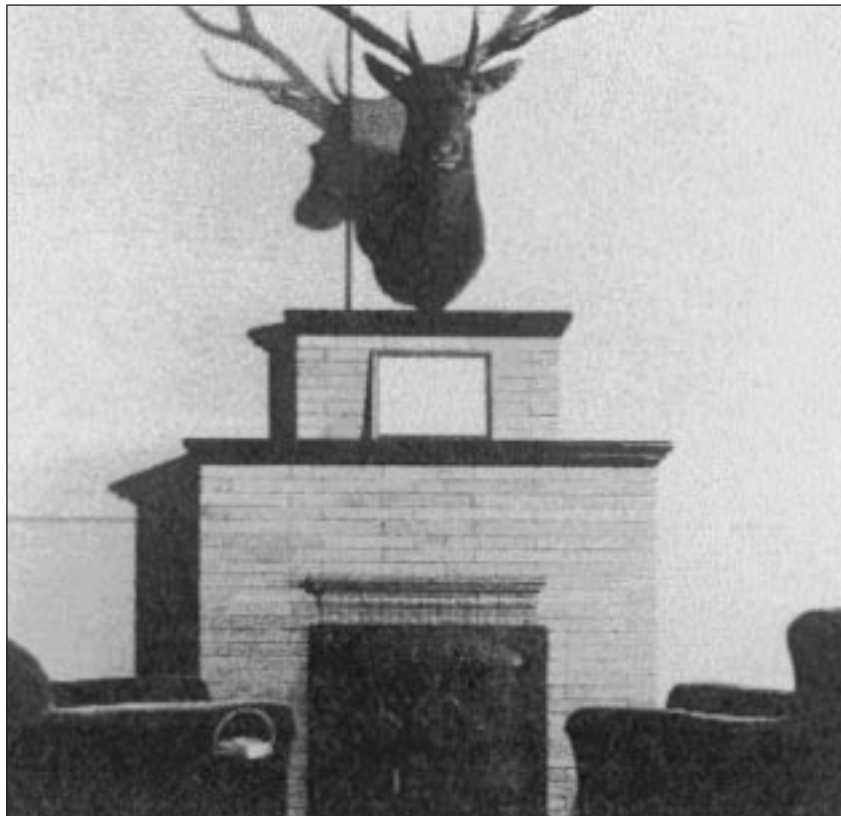
#### UPDATE, 9/1/2001:

In 2001, “1441” installed the first lady E.R. in Wisconsin. The lodge has traditionally been strong in “ritual”.

---

## *Platteville - 1460*

*Chartered July 11, 1923*



### CHARTER DATA:

Date of Dispensation - February 28, 1923

Date of Institution - April 2, 1923<sup>1</sup>

Installing Officer - Harry Kiefer

Sponsoring Lodge - Galena, Illinois No. 883

### CHARTER MEMBERS:

H. E. Eastman

E. J. Smith

O. E. DeWitt

James O. Luce

Frank Young

C. F. Wolf

N. W. Wellers

Ed Friederich

B. M. Campbell

B. R. Long

E. C. Krog

M. S. Block

D. C. Fiedler

S. E. Meyer

B. L. Baumhover

---

Orton Keyes	W. M. Rindlaub	J. F. Stocker
J. W. Murphy, Jr.	A. L. Genisot	F. H. Heberlein
J. E. Nicholas	R. A. Goodell	H. M. Billings
W. A. Roddick	C. H. E. Wheeler	H. L. Youmans
J. W. Glasgow	O. H. Johnson	C. H. Burg
A. W. Jentz	V. E. Edwards	D. S. Shepherd
H. C. Pitts	Edward Webb	N. Matercha
A. W. Kopp	C. W. Snow	R. W. Piquette

### FIRST LODGE OFFICERS:

Exalted Ruler . . . . .	David Gardner, Jr.
Esteemed Leading Knight. . . . .	C. H. Meyer
Esteemed Loyal Knight . . . . .	J. E. Evans
Esteemed Lecturing Knight. . . . .	George R. Dobson
Secretary . . . . .	E. J. Sawbridge
Treasurer . . . . .	W. H. Doyle
Tiler. . . . .	H. R. Boll
Inner Guard. . . . .	Geo. J. Halsey
Chaplain . . . . .	F. H. Knapp
Esquire . . . . .	E. H. Cordingly
Trustees. . . . .	R. C. Harvey - J. H. McCulloch - Scott A. Cairy

The first lodge sessions were held on the second floor of the Hoosier Building. Since 1924, Platteville lodge has occupied the third floor of the Hoppe Building.

### UPDATE, 9/1/2001:

Platteville lodge has moved on to other quarters. This lodge traditionally holds the last State-President's-Visitation each year...a great entertainment event.

---

## *Beaver Dam - 1540*

*Chartered July 12, 1928*



### CHARTER DATA:

Date of Dispensation - June 3, 1928

Date of Institution - July 12, 1928

Installing Officer - Edward Mackey

Sponsoring Lodge - Watertown No. 666

### CHARTER MEMBERS:

Irvin E. Huff

Wm. Kohl

Rudolph Berghauer

H. R. Jones

John O. Jones

Col. P.J. Zink

Art. Meister

Lewis Payne

Howard E. Shepard

A. T. Zimmerman

Louis Fritz

August Storck

Leslie W. Peterson

Frank J. Zinney

J. C. Leatherberg

Peter E. Manley

Edward A. Breckter

Eugene A. Clifford

Elgin Chivers

Martin Doorneck

Clarence Merthaler

B. O. Shoen

Albert De Young

Charles E. Galloway

Frank W. Klason

Frank W. Miller

E. J. Marthaler

Lucius S. Taylor

Egbert G. Appleton

Herbert Meister

---

Henry Brown	R. E. Drugwold	Lester W. Staab
H. B. Hendler	William P. Marlow	J. B. Casper
Carl H. Roedl	Ray Fohey	Edward Bates
Ed. Dowe	Rudolph Marquardt	Henry Hopf
Harry Marthaler	L. J. Hartzheim	William Beck
Henry Kroll	J. W. Kleinmann	F. W. Lightner
	Alvin Draheim	

#### FIRST LODGE OFFICERS:

Exalted Ruler . . . . .	Wm. P. Muth
Esteemed Leading Knight . . . . .	Roy P. Gray
Esteemed Loyal Knight . . . . .	Herman Kroll
Esteemed Lecturing Knight . . . . .	Geo. Keifer
Secretary . . . . .	S. A. Piszczek
Treasurer . . . . .	R. F. Clark
Tiler . . . . .	Frank Zweck
Inner Guard . . . . .	L. H. Buckda
Chaplain . . . . .	S. N. Goose
Esquire . . . . .	E. S. Hammer
Trustees. . . . .	Leo Whitmore - Fred Herband - Bert Shephard

Beaver Dam, the “baby” lodge of the state, spent its early years in various rented quarters and only recently moved into its own, well appointed, clubhouse. Early records are sketchy since all lodge records prior to 1938 have been lost. However, the lodge has gained steadily in recent years and is now a thriving link in the chain of Wisconsin lodges.



---

## *Walworth-Lakeland - 2201*



### CHARTER DATA:

Date of Dispensation - February 17, 1961  
Date of Institution - May 22, 1961  
Installing Officer - (not recorded)  
Sponsoring Lodge - Janesville, Racine, Rockford, Il.  
Charter Members - 76

### FIRST LODGE OFFICERS:

Exalted Ruler . . . . .	Frank Hammett
Esteemed Leading Knight. . . . .	David Curry
Esteemed Loyal Knight . . . . .	Kenneth Huff
Esteemed Lecturing Knight. . . . .	Ben Hoffman
Secretary. . . . .	Clayton Hanson
Treasurer . . . . .	Madison Farrar
Tiler . . . . .	A. T. Westmas
Trustees . . . . .	Jack Fagan, Tom Gibbs, Paul Pemberton, Bill Stevens, Victor Fiegel

---

The first recorded business meeting was on April 12, 1961 at a restaurant in Delavan, WI. On January 9, 1963 the Lodge moved into its first permanent quarters...a leased facility. The lodge then bought land and built its present home, for which there was a grand opening on October 14, 1972.

The Lodge Historian notes that the original plans for their new lodge building had neglected to include a bar. In spite of the sober nature of the Elks of this lodge, this oversight was quickly corrected.

The mortgage was burned 20 years later.

Now with 153 members, the lodge remains a vibrant and valuable contributor to the well-being of the citizens in its home area. It also continues to provide dedicated Elks who perform valuable services for the Wisconsin Elks Association and for the Grand Lodge.

---

## Other Wisconsin Lodges - Surrendered Charters

### *Rhineland - 598*

*Chartered 1900 - Charter Withdrawn 1946*

#### **UPDATE, 9/1/2001:**

This lodge was instituted on June 19, 1900 with 24 Charter Members. A.J. Worden was the Installing Officer and Wausau Lodge 248 was the sponsoring lodge. It should be noted that Rhineland 598 was one of the eleven lodges which created the Wisconsin Elks Association in April, 1902...sending two of its members to the organizational meeting. This lodge withdrew from the State Association in 1941, citing an inability to pay State Dues. It surrendered its charter in 1946.

### *Merrill - 696*

*Chartered 1901 - Charter Withdrawn 1945*

#### **UPDATE, 9/1/2001:**

No records of this lodge are available. State records in-suggest that the lodge withdrew from the State Association in 1941, citing an inability to pay State Dues. It surrendered its charter in 1945.

### *Wauwatosa - Lodge Number Unknown*

*Chartered 1960 - Charter Withdrawn 1977*

#### **UPDATE, 9/1/2001:**

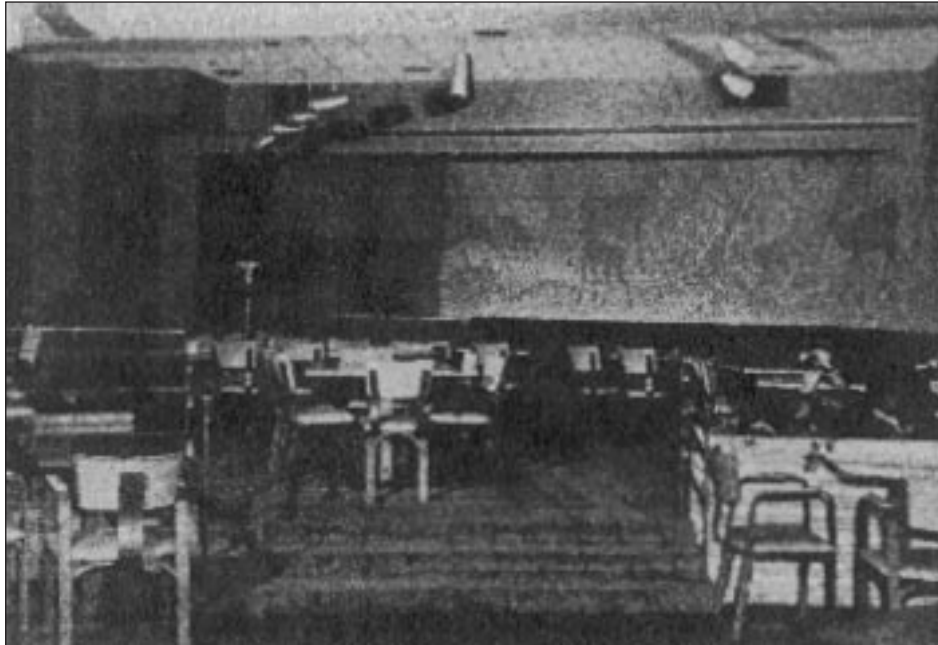
The city of Wauwatosa had, in 1960, a population of over 100,000 souls. Although one of the largest cities in Wisconsin, it was a suburb of Milwaukee...with that well established lodge and (with Brookfield) was just east of Waukesha..another well-established lodge. A new jurisdictional area was carved out between these two and the Wauwatosa lodge was chartered in 1960.

There was great concern, among Waukesha and Milwaukee Elks, that the ones who lived in the new jurisdiction would have to transfer their memberships....to help create the new Wauwatosa lodge "from scratch". The Grand Lodge later established that an Elk's jurisdiction could be defined by either the site where he lived or the site where he worked. This was a mortal blow to the new lodge. Down to 64 members in 1976, it surrendered its charter in 1977. The Waukesha and Milwaukee lodges breathed a sigh of relief.

---

## *La Crosse - 300*

*Chartered July 15, 1895*



### **CHARTER DATA:**

Date of Dispensation -

Date of Institution - April 6, 1895

Installing Officer - J. W. Watson

Sponsoring Lodge - Fond du Lac No. 57

### **UPDATE, 9/1/2001:**

With over 1,000 Elks in the 1980s, the main attraction for the members was their club facility. When forced to abandon that site, membership collapsed. The Lodge surrendered its charter in 2000.

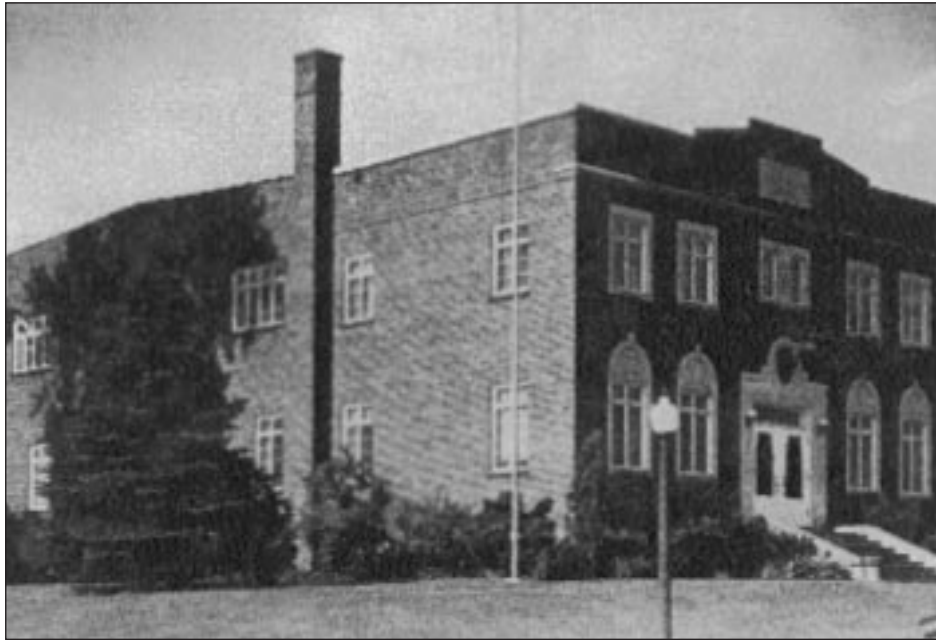
## *Sturgeon Bay - 2076     Chartered 1959*

This lodge served a relatively remote area of Wisconsin. With a small population-base, "2076" struggled throughout its existence, finally merging with the Green Bay Lodge in 1998. Sturgeon Bay lodge is still remembered for its very high per-capita support of the Elks National Foundation...and for its ability to find youngsters "in the sticks" for Elks Scholarships...kids who otherwise had little chance for advanced education. "2076" had an excellent Scholar Committee.

---

## *Hudson - 640*

*Chartered July 23, 1901*



### CHARTER DATA:

Date of Dispensation -  
Date of Institution - January 3, 1901  
Installing Officer - Thomas B. Mills  
Sponsoring Lodge - Ashland No. 137

### **UPDATE, 9/1/2001:**

A charming community and gracious Elks families made this a favorite meeting place for State Officers for many years. After surrendering the building pictured here, the lodge gradually lost members, surrendering its charter in 1995.

---

## *Kenosha - 750*

*Chartered August 14, 1902*



### **CHARTER DATA:**

Date of Dispensation -  
Date of Institution - January 4, 1902  
Installing Officer - Fred W. Brown  
Sponsoring Lodge - Racine No. 252

### **UPDATE, 9/1/2001:**

The proud and very active Kenosha lodge found itself deep in debt due to its club operations. It decided to clear up those debts by “selling” life memberships to its members. The “sale” was successful...the old debts were cleared up...but the lodge had eliminated a major portion of its future dues revenues. Bankrupt, the lodge surrendered its charter 3 years later.



## Elk's Flag Day in Two Rivers

(Manitowoc and  
Two Rivers Elks)

Wisconsin Elks  
at Grand Lodge



**THE**



**END**